

BFA Survey Results

Survey Responses

- 3,000 surveys mailed to Blessed Families
- 250 completed and submitted by mail or via the website

Survey Areas

- Personal Data
- Services Sought
- Services Volunteered
- Family Retreat
- Funding
- Additional Comments

1) Ways a Family Association Might Help You

Areas:

- Family formation, growth & health
- Religious education services
- Counseling services
- Information services
- Strengthening communication

Survey Results

| | Score | 3 | 2 | 1 | 0 | NA |
|---|-------|-----|----------------------------|-----|----|-----|
| Section 1 - Family formation & growth | | | | | | |
| Blessing or Matching your children - guidance for parents | 486 | 150 | 36 | 22 | 4 | 19 |
| Improving relationships between parents and children | 390 | 108 | 66 | 27 | 2 | 28 |
| Improving relationships between spouses | 362 | 97 | 71 | 32 | 1 | 30 |
| Financial Planning | 290 | 71 | 77 | 52 | 4 | 27 |
| Marriage, sexual relations and gener issues | 279 | 62 | 93 | 43 | 10 | 23 |
| Retirement planning | 254 | 57 | 83 | 48 | 15 | 28 |
| Understanding death, grieving and survival | 251 | 56 | 83 | 56 | 9 | 27 |
| Choosing a college/planning for college | 248 | 57 | 77 | 67 | 4 | 26 |
| Depression and menopause | 237 | 51 | 84 | 60 | 11 | 25 |
| Health, Nutrition and Fitness education for the family | 191 | 39 | 74 | 83 | 4 | 31 |
| Fertility and Adoption Issues | 103 | 28 | 19 | 119 | 22 | 43 |
| Section 2 - Religious Education Services | | | | | | |
| Church traditions | 423 | 120 | 63 | 19 | 6 | 23 |
| Sunday School curricula | 326 | 87 | 65 | 33 | 19 | 27 |
| II Shim preparation | 325 | 82 | 79 | 27 | 15 | 28 |
| Moral Education | 271 | 80 | 31 | 9 | 2 | 109 |
| Section 3 - Information services | | | | | | |
| | | | Counseling services | | | |
| Family counseling | 276 | 70 | 66 | 48 | 10 | 37 |
| Counselor training | 261 | 65 | 66 | 52 | 11 | 37 |
| Marriage counseling | 257 | 63 | 68 | 55 | 7 | 38 |
| Personal counseling | 205 | 43 | 76 | 64 | 8 | 40 |
| Section 4 - Information services | | | | | | |
| Maintain a calendar of events | 417 | 114 | 75 | 20 | 2 | 20 |
| Maintaining a membership directory | 403 | 108 | 79 | 20 | 3 | 21 |
| Maintaining a directory of services | 397 | 106 | 79 | 18 | 4 | 23 |
| Provide data about colleges where Unificationists are attending | 344 | 90 | 74 | 35 | 7 | 25 |
| Grass Roots Newsletters | 325 | 74 | 103 | 23 | 5 | 26 |
| International home stay information | 272 | 65 | 77 | 43 | 17 | 29 |
| Media Preference - | | | | | | |
| Strengthening communication on shared interests & concerns | | | | | | |
| Develop action plans based on consensus | 286 | 69 | 79 | 32 | 14 | 37 |
| Publish information collected | 73 | 17 | 22 | 8 | 5 | 179 |
| Hotlines and referral assistance | 65 | 16 | 17 | 8 | 8 | 182 |
| Collect input on shared interests | 64 | 14 | 22 | 9 | 6 | 180 |
| Convene discussions and develop consensus | 56 | 11 | 23 | 10 | 5 | 182 |
| Media Preference - | | | | | | |

1. Family Formation & Growth

| | Score | 3 | 2 | 1 | 0 | NA |
|---|-------|-----|----|-----|----|----|
| Blessing or Matching your children - guidance for parents | 486 | 150 | 36 | 22 | 4 | 19 |
| Improving relationships between parents and children | 390 | 108 | 66 | 27 | 2 | 28 |
| Improving relationships between spouses | 362 | 97 | 71 | 32 | 1 | 30 |
| Financial Planning | 290 | 71 | 77 | 52 | 4 | 27 |
| Marriage, sexual relations and gener issues | 279 | 62 | 93 | 43 | 10 | 23 |
| Retirement planning | 254 | 57 | 83 | 48 | 15 | 28 |
| Understanding death, grieving and survival | 251 | 56 | 83 | 56 | 9 | 27 |
| Choosing a college/planning for college | 248 | 57 | 77 | 67 | 4 | 26 |
| Depression and menopause | 237 | 51 | 84 | 60 | 11 | 25 |
| Health, Nutrition and Fitness education for the family | 191 | 39 | 74 | 83 | 4 | 31 |
| Fertility and Adoption Issues | 103 | 28 | 19 | 119 | 22 | 43 |

2. Religious education services

| | Score | 3 | 2 | 1 | 0 | NA |
|-------------------------|-------|-----|----|----|----|-----|
| Church traditions | 423 | 120 | 63 | 19 | 6 | 23 |
| Sunday School curricula | 326 | 87 | 65 | 33 | 19 | 27 |
| Il Shim preparation | 325 | 82 | 79 | 27 | 15 | 28 |
| Moral Education | 271 | 80 | 31 | 9 | 2 | 109 |

3. Counseling services

| | Score | 3 | 2 | 1 | 0 | NA |
|---------------------|-------|----|----|----|----|----|
| Family counseling | 276 | 70 | 66 | 48 | 10 | 37 |
| Counselor training | 261 | 65 | 66 | 52 | 11 | 37 |
| Marriage counseling | 257 | 63 | 68 | 55 | 7 | 38 |
| Personal counseling | 205 | 43 | 76 | 64 | 8 | 40 |

4. Information services

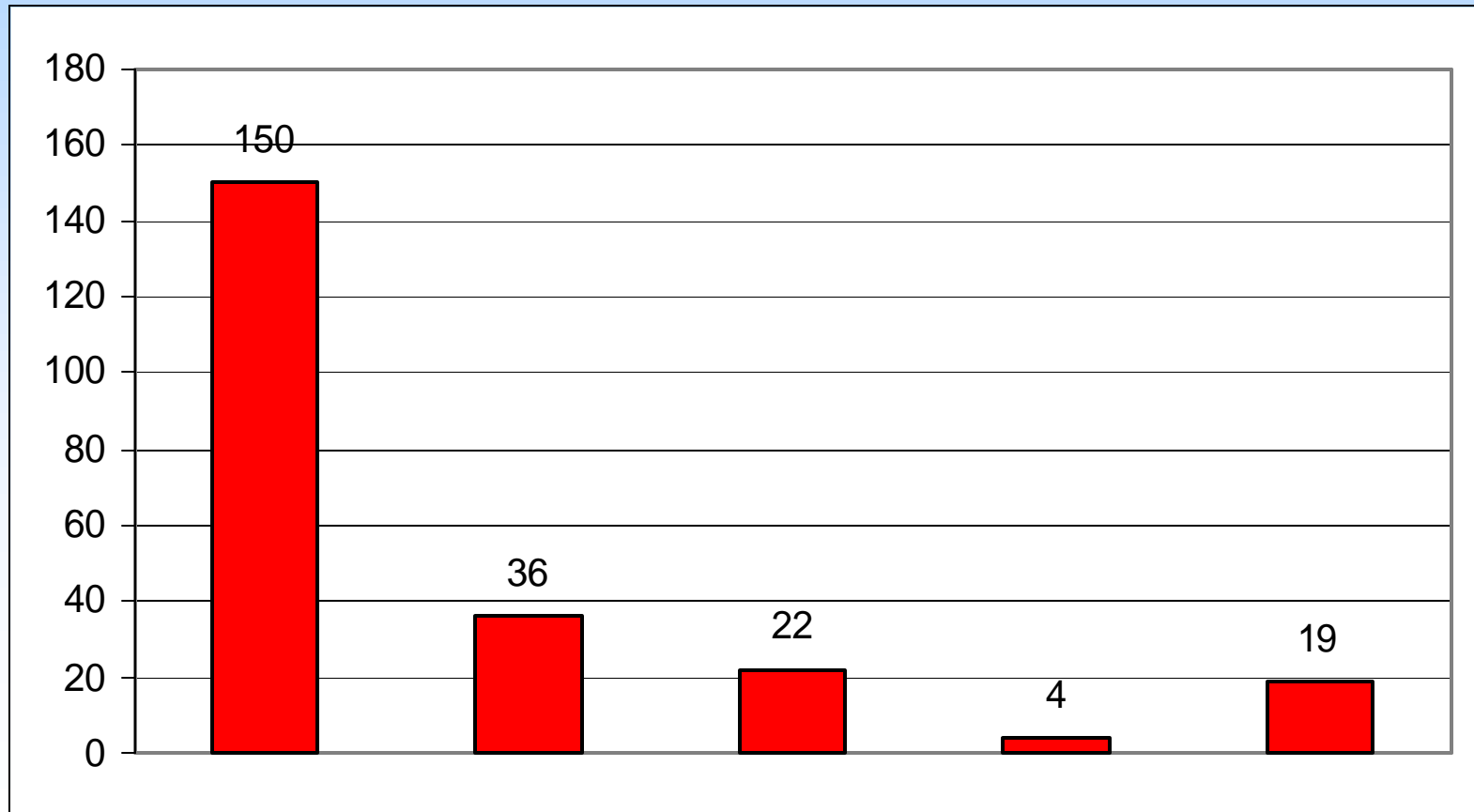
| | Score | 3 | 2 | 1 | 0 | NA |
|--|-------|-----|-----|----|----|----|
| Maintain a calendar of events | 417 | 114 | 75 | 20 | 2 | 20 |
| Maintaining a membership directory | 403 | 108 | 79 | 20 | 3 | 21 |
| Maintaining a directory of services | 397 | 106 | 79 | 18 | 4 | 23 |
| Provide data about colleges where Unificationists are attend | 344 | 90 | 74 | 35 | 7 | 25 |
| Grass Roots Newsletters | 325 | 74 | 103 | 23 | 5 | 26 |
| International home stay information | 272 | 65 | 77 | 43 | 17 | 29 |
| Media Preference - | | | | | | |

5. Strengthening communication

| | Score | 3 | 2 | 1 | 0 | NA |
|---|-------|----|----|----|----|-----|
| Develop action plans based on consensus | 286 | 69 | 79 | 32 | 14 | 37 |
| Publish information collected | 73 | 17 | 22 | 8 | 5 | 179 |
| Hotlines and referral assistance | 65 | 16 | 17 | 8 | 8 | 182 |
| Collect input on shared interests | 64 | 14 | 22 | 9 | 6 | 180 |
| Convene discussions and develop consensus | 56 | 11 | 23 | 10 | 5 | 182 |
| Media Preference - | | | | | | |

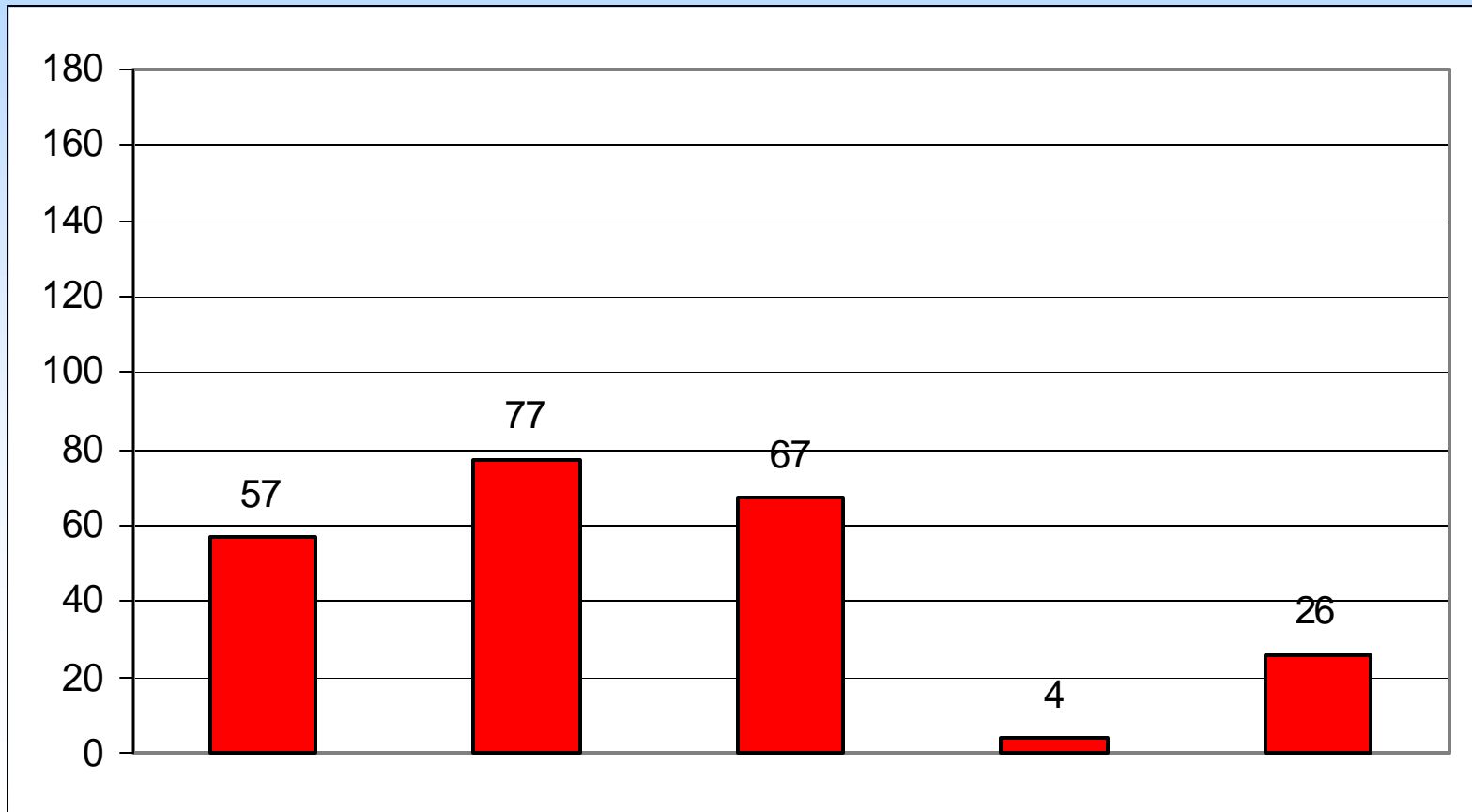
Family Formation, Growth & Health

Blessing and/or Matching your children
- guidance for parents



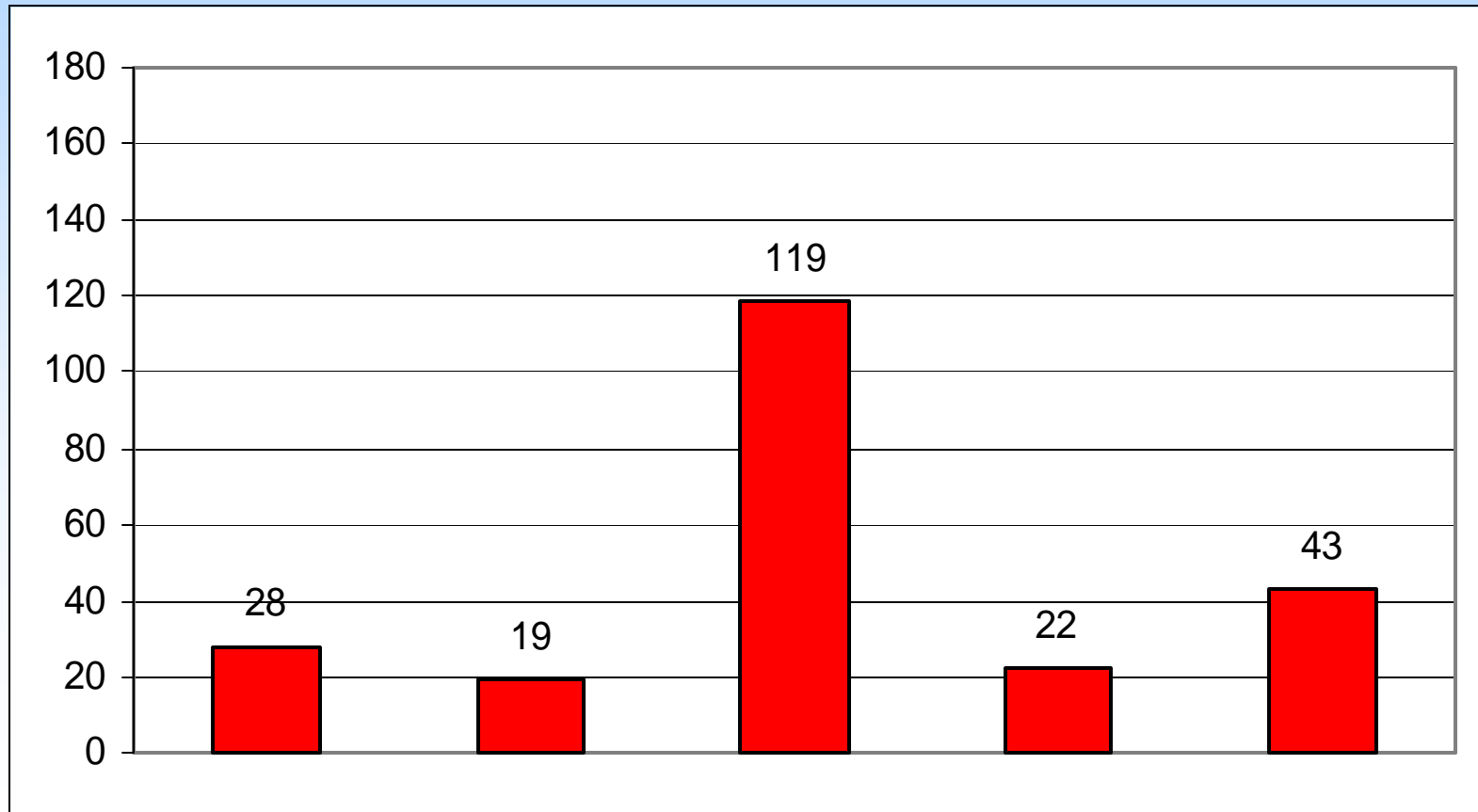
Family Formation, Growth & Health

Choosing a College / Planning for College



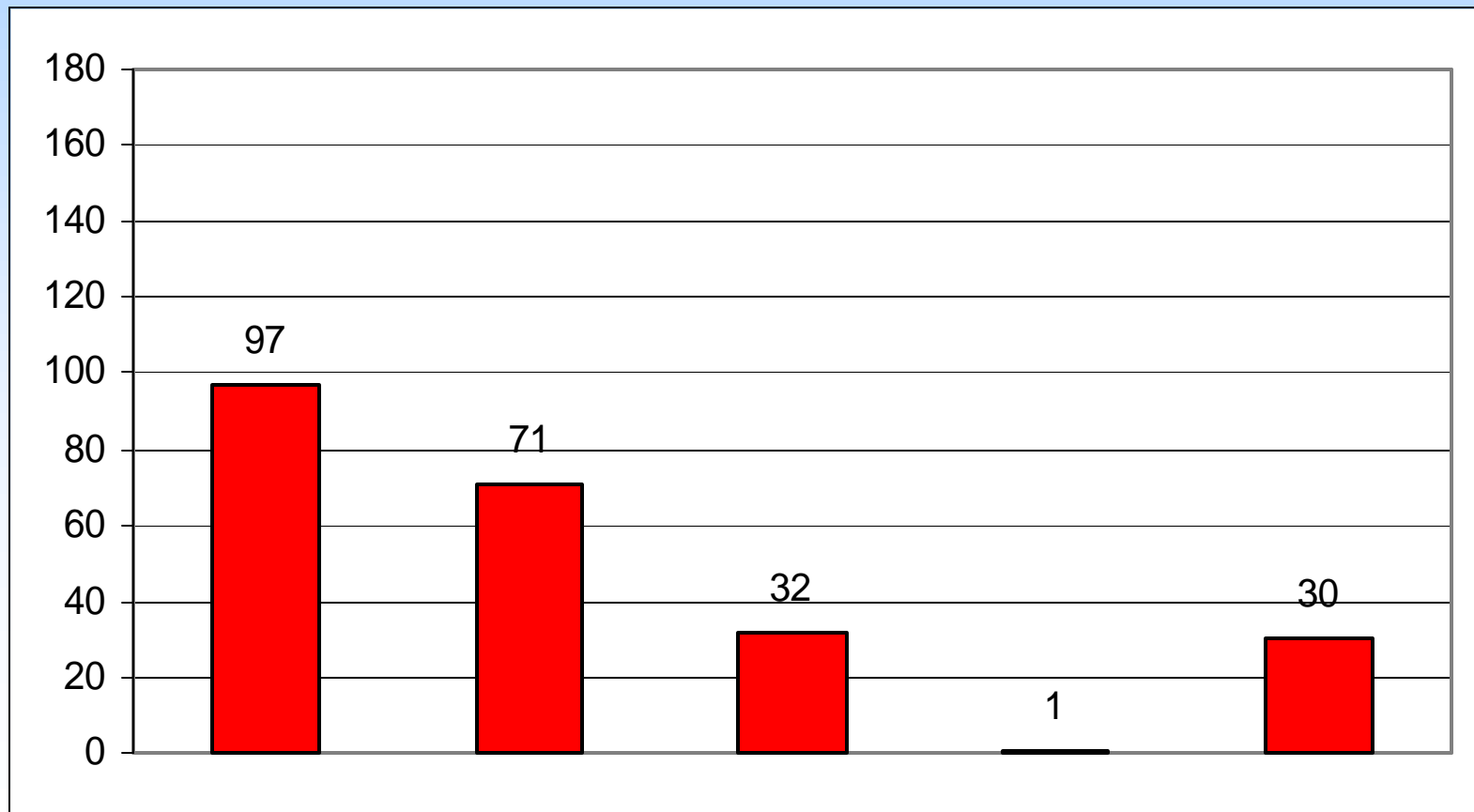
Family Formation, Growth & Health

Fertility & Adoption Issues



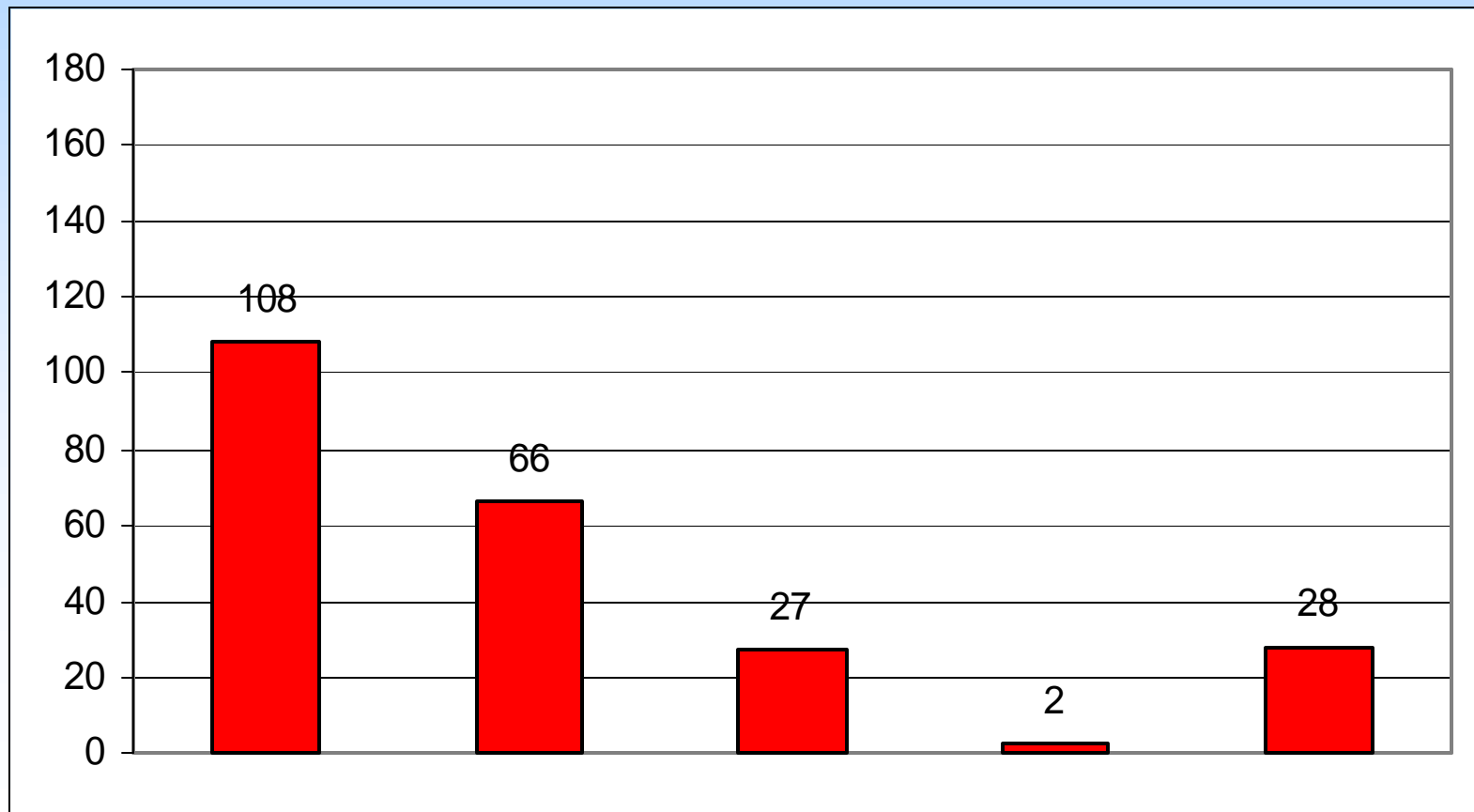
Family Formation, Growth & Health

Improving Relationships between Spouses



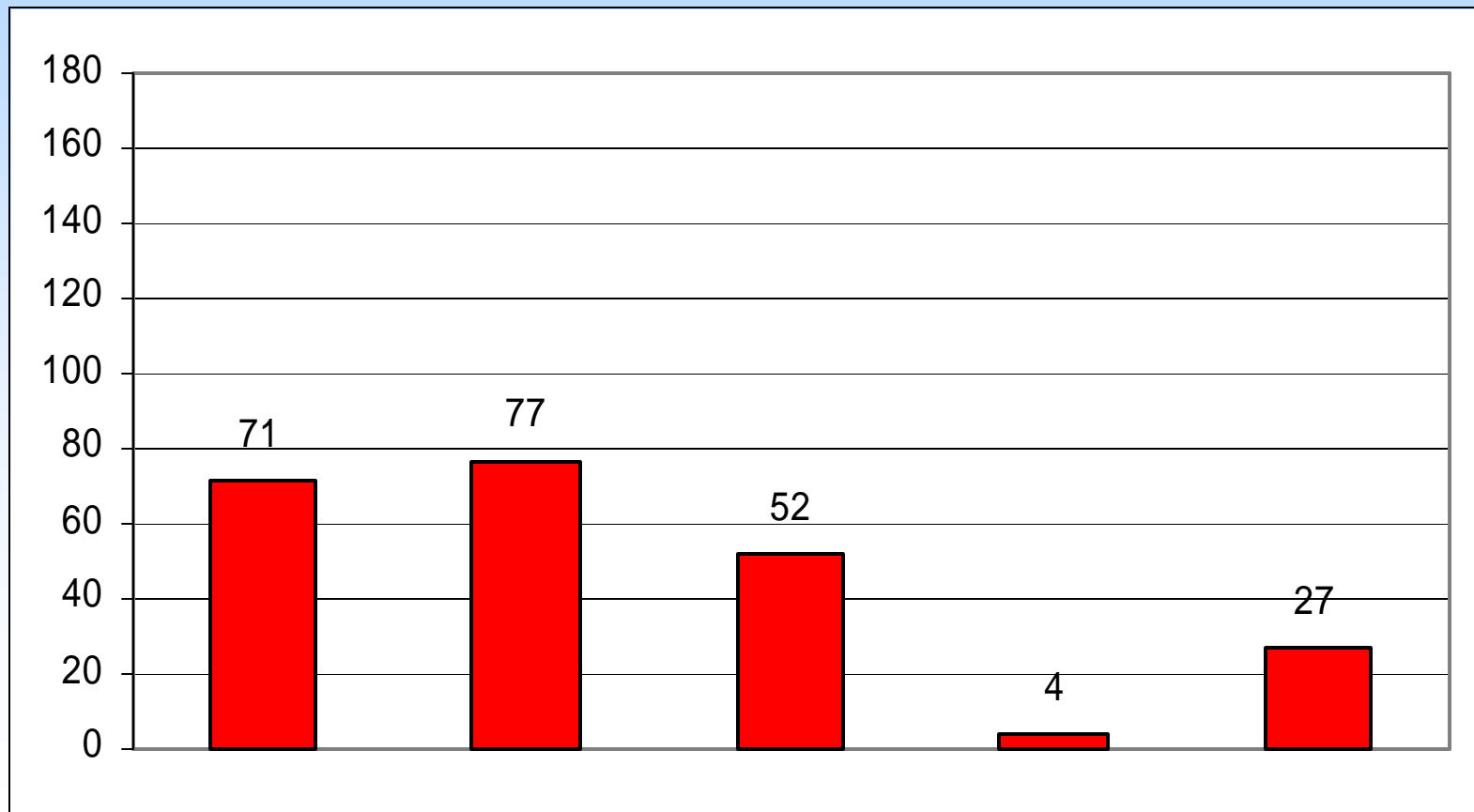
Family Formation, Growth & Health

Improving Relationships between Parents & Children



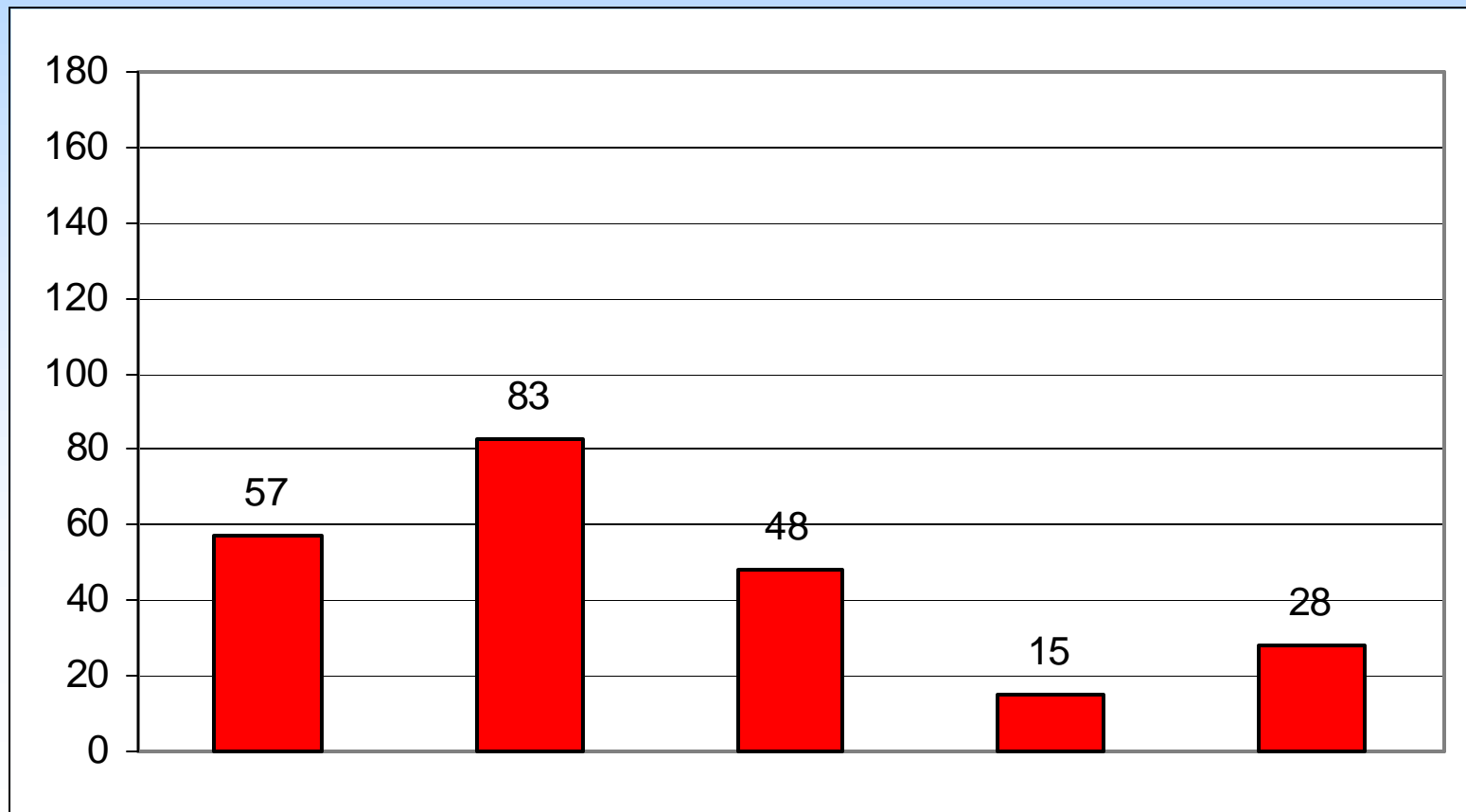
Family Formation, Growth & Health

Financial Planning



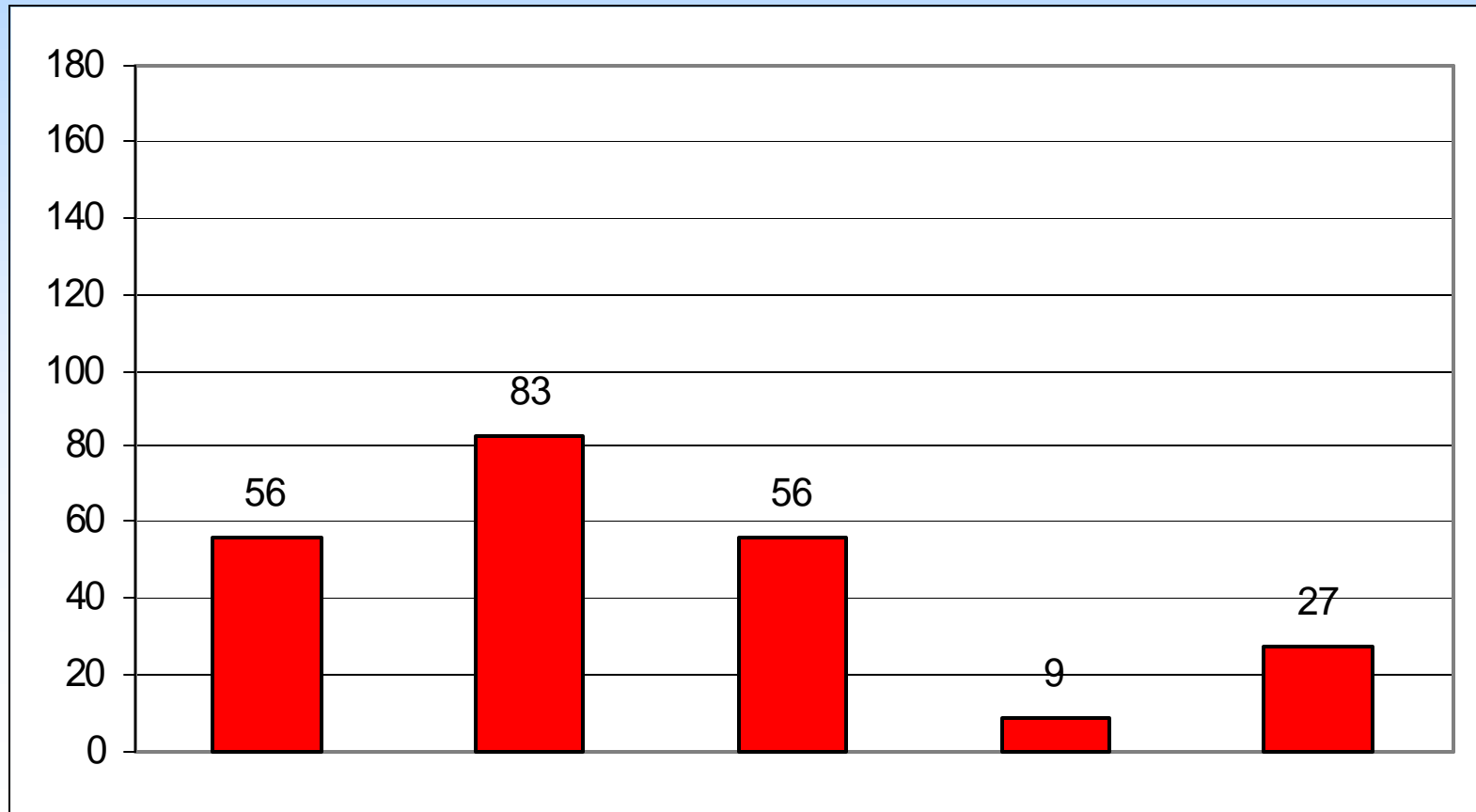
Family Formation, Growth & Health

Health, Nutrition & Fitness Education



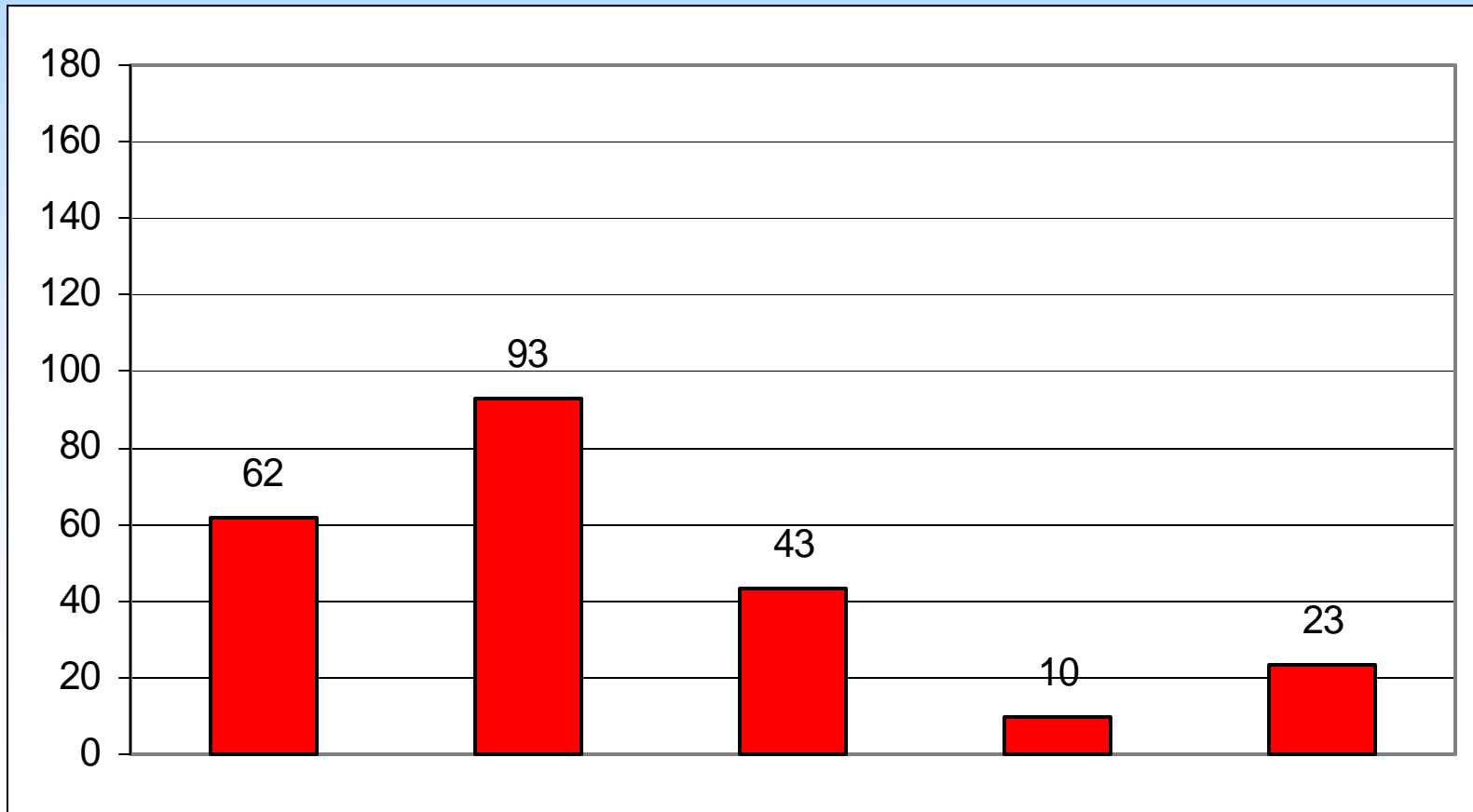
Family Formation, Growth & Health

Understanding death, grieving & survival



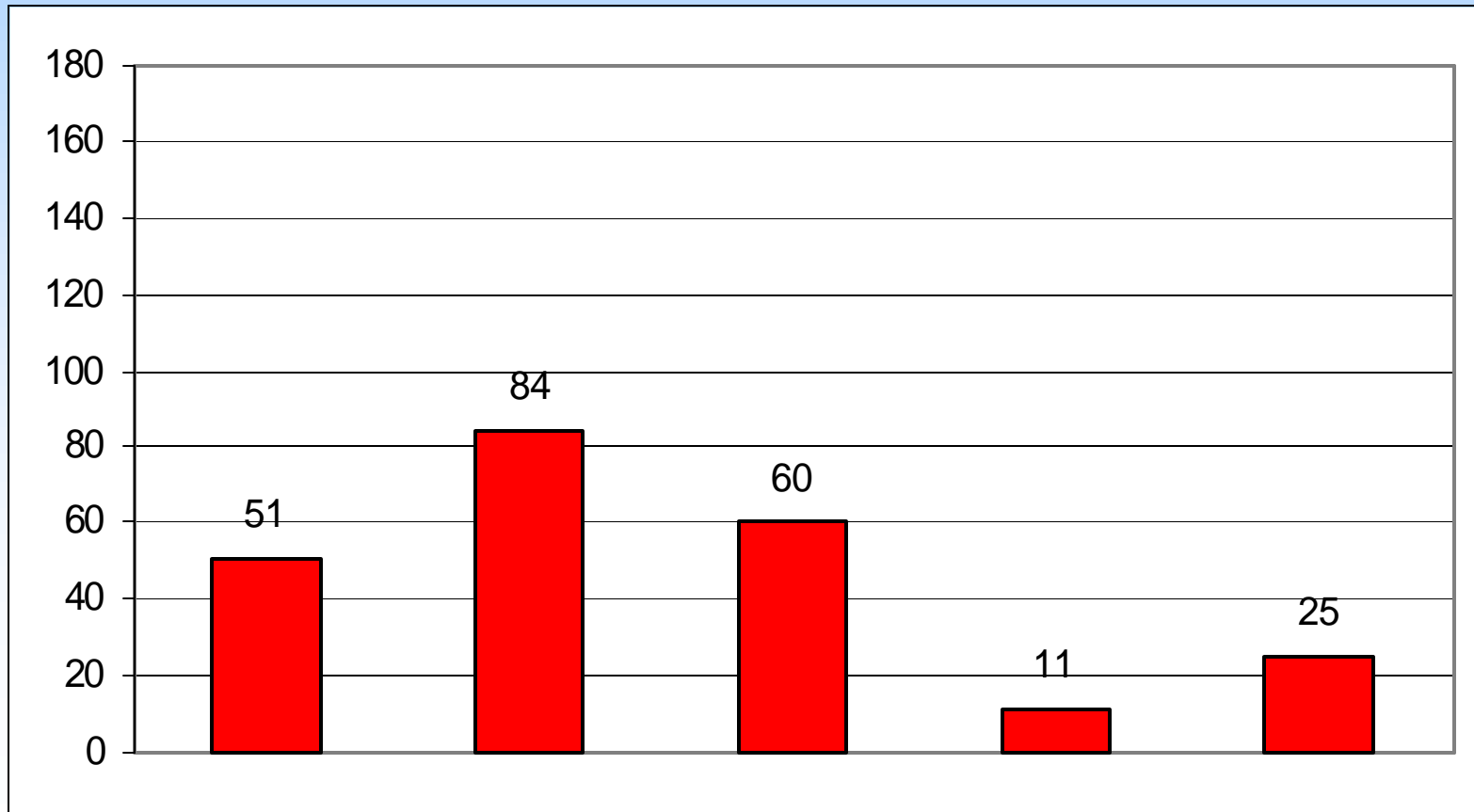
Family Formation, Growth & Health

Marriage, sexual relations & gender issues



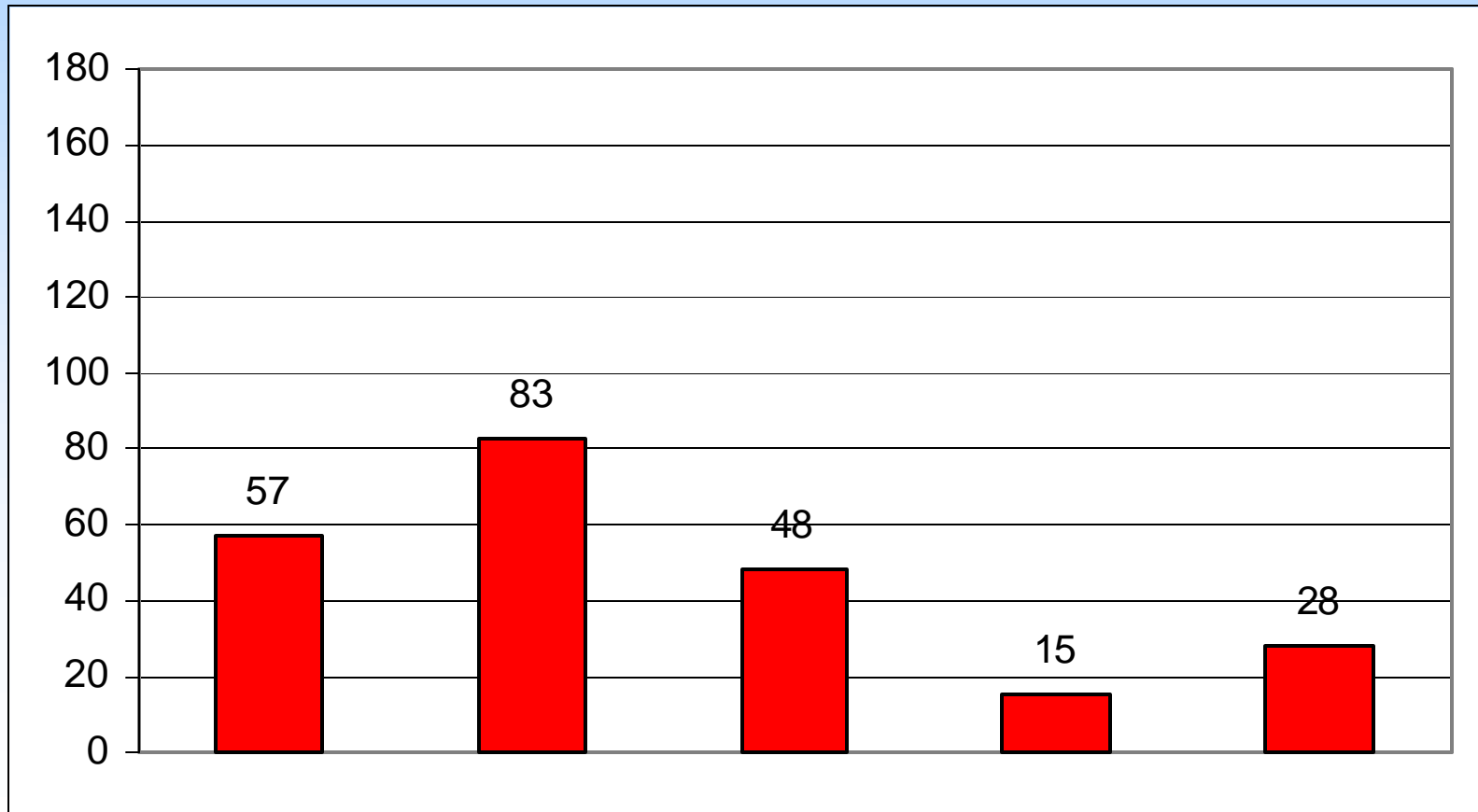
Family Formation, Growth & Health

Depression & Menopause



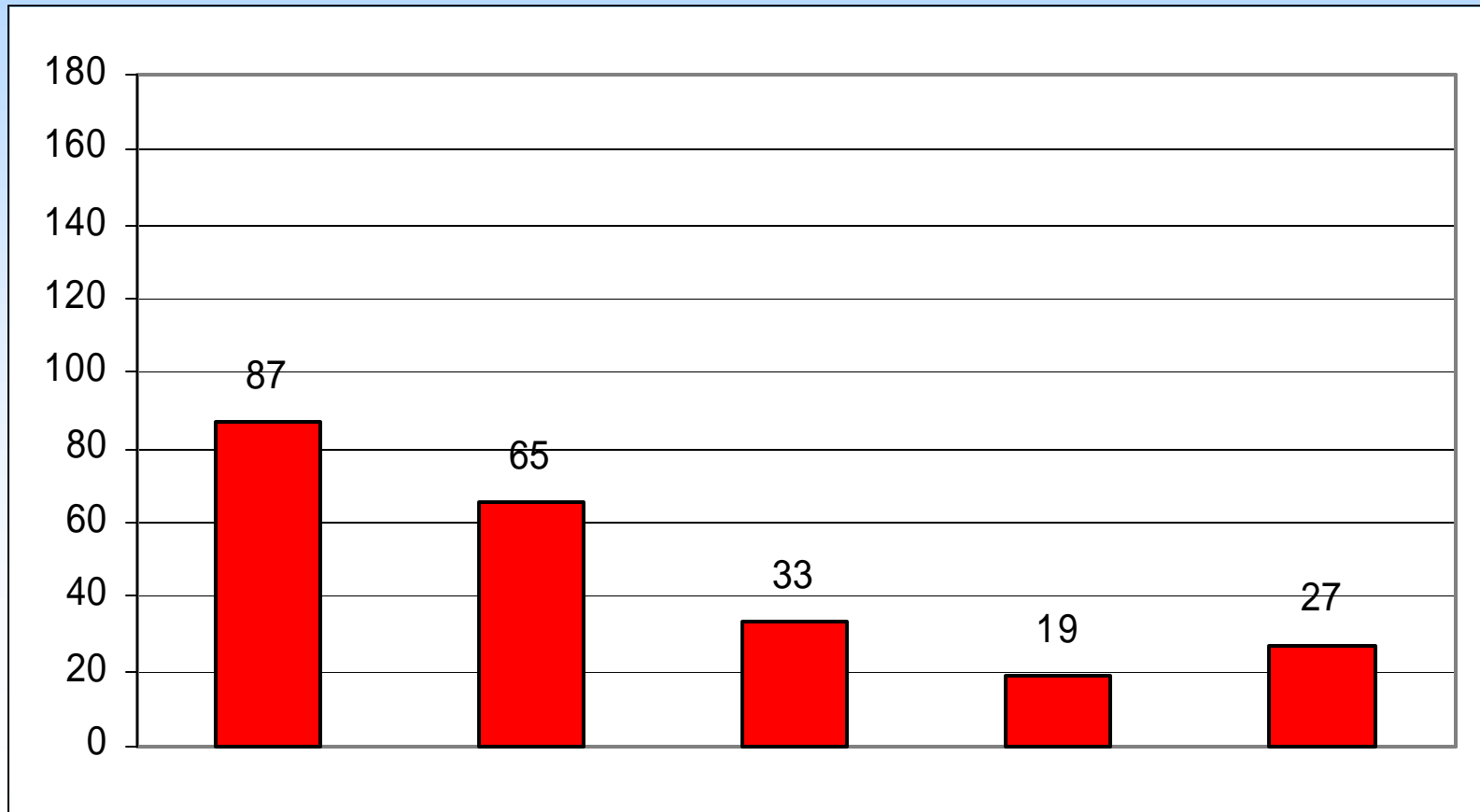
Family Formation, Growth & Health

Retirement Planning



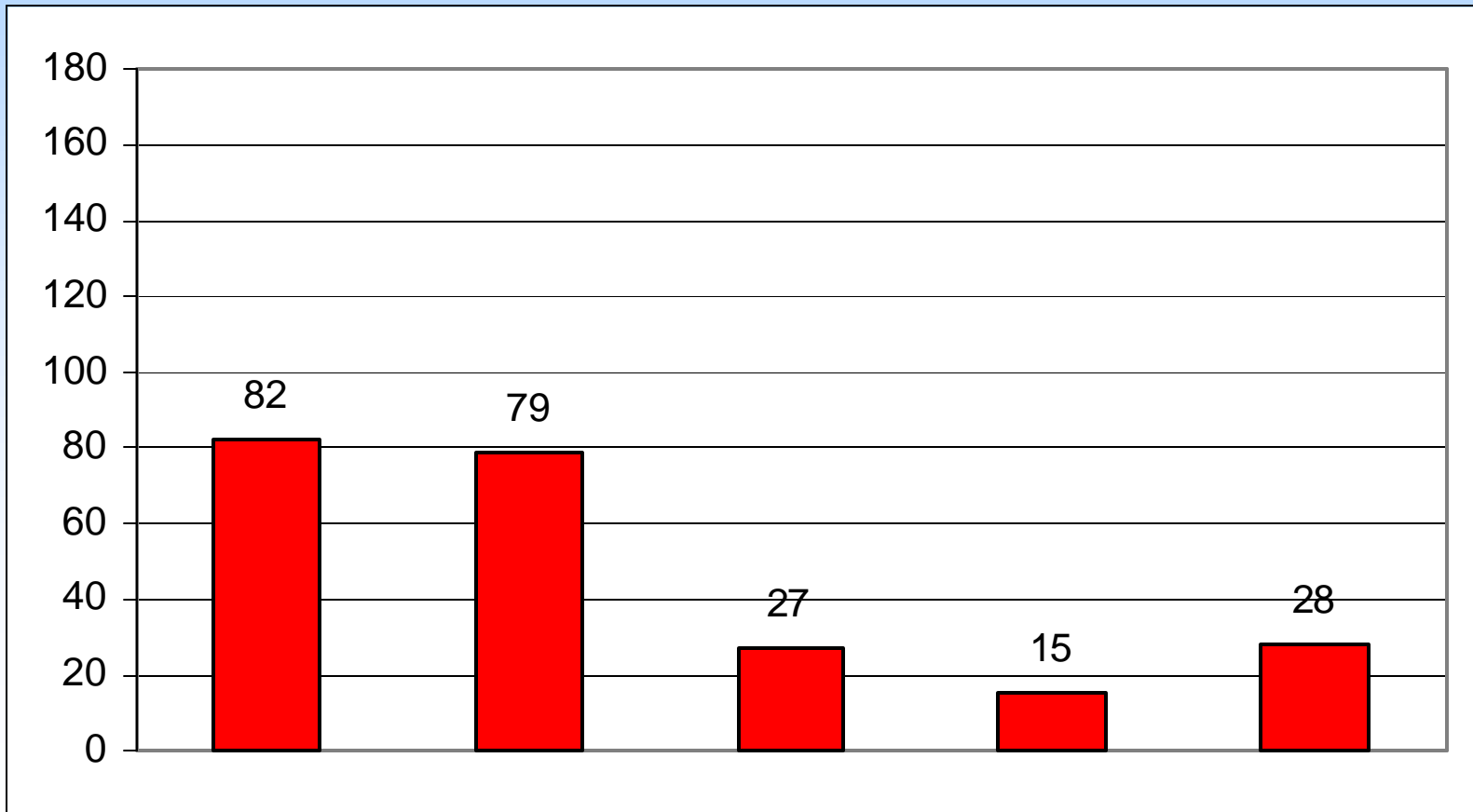
Religious Education Services

Sunday School Services



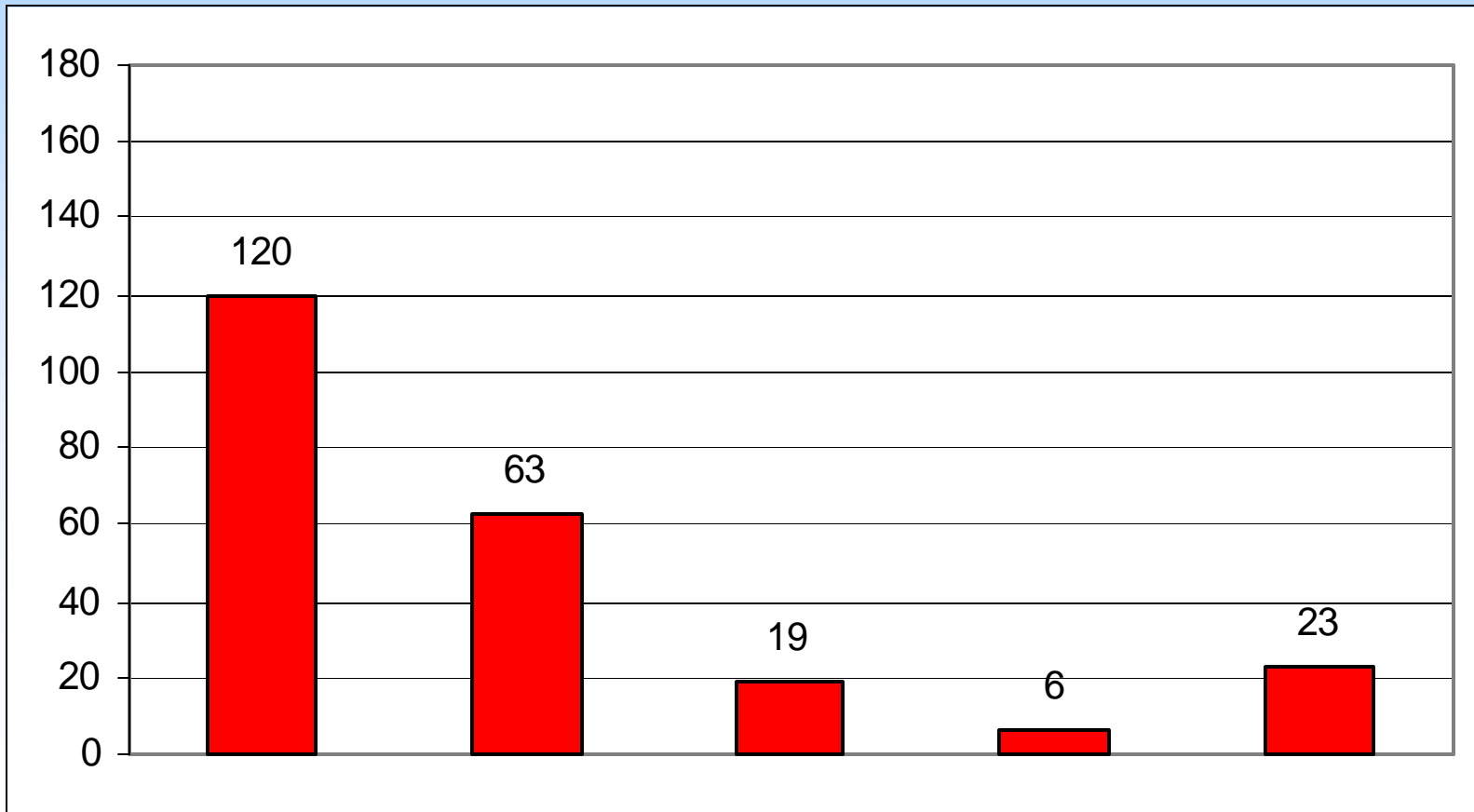
Religious Education Services

Il Shim Preparation & Ceremony



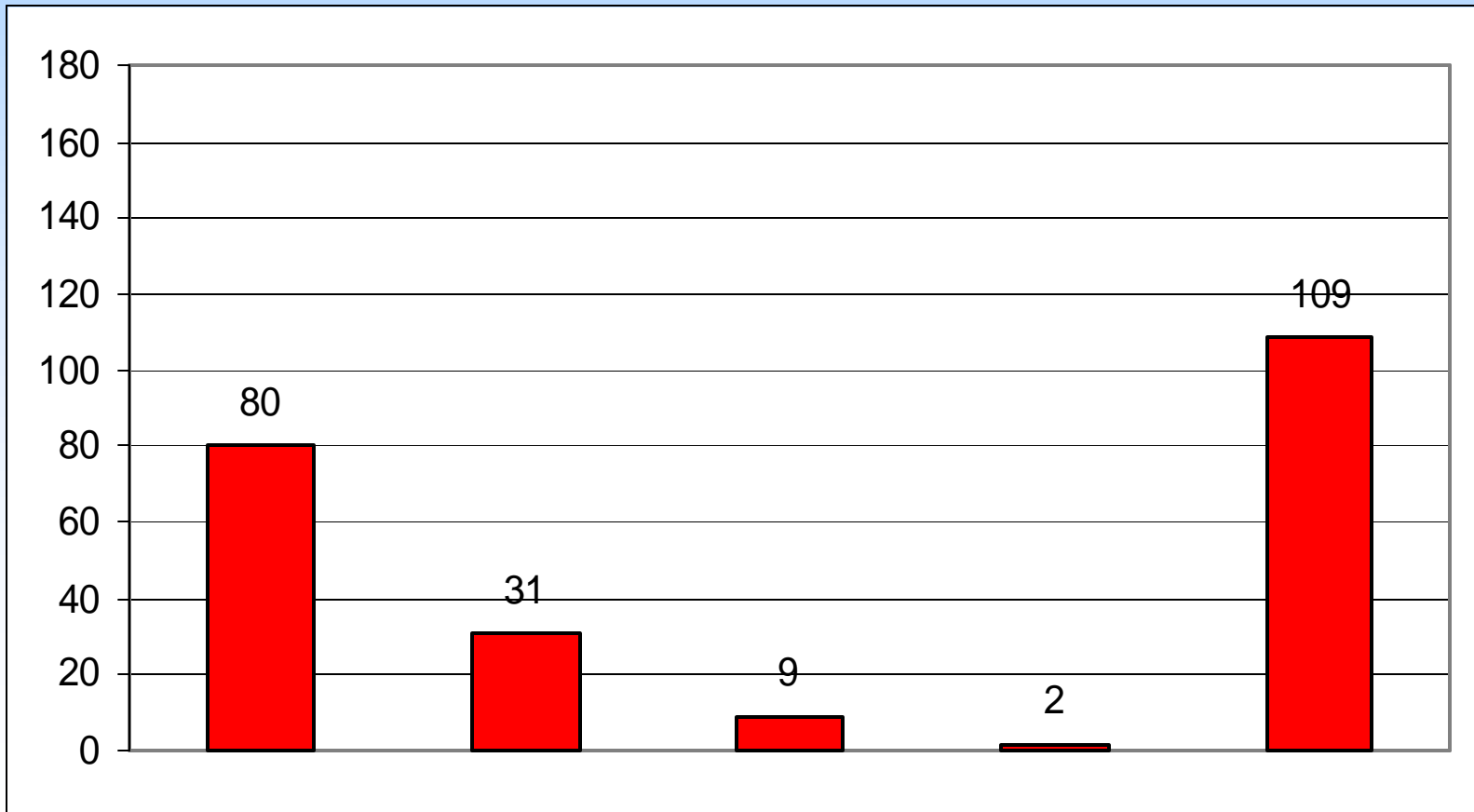
Religious Education Services

Church Traditions (e.g. 5am Pledge, Holy Days)



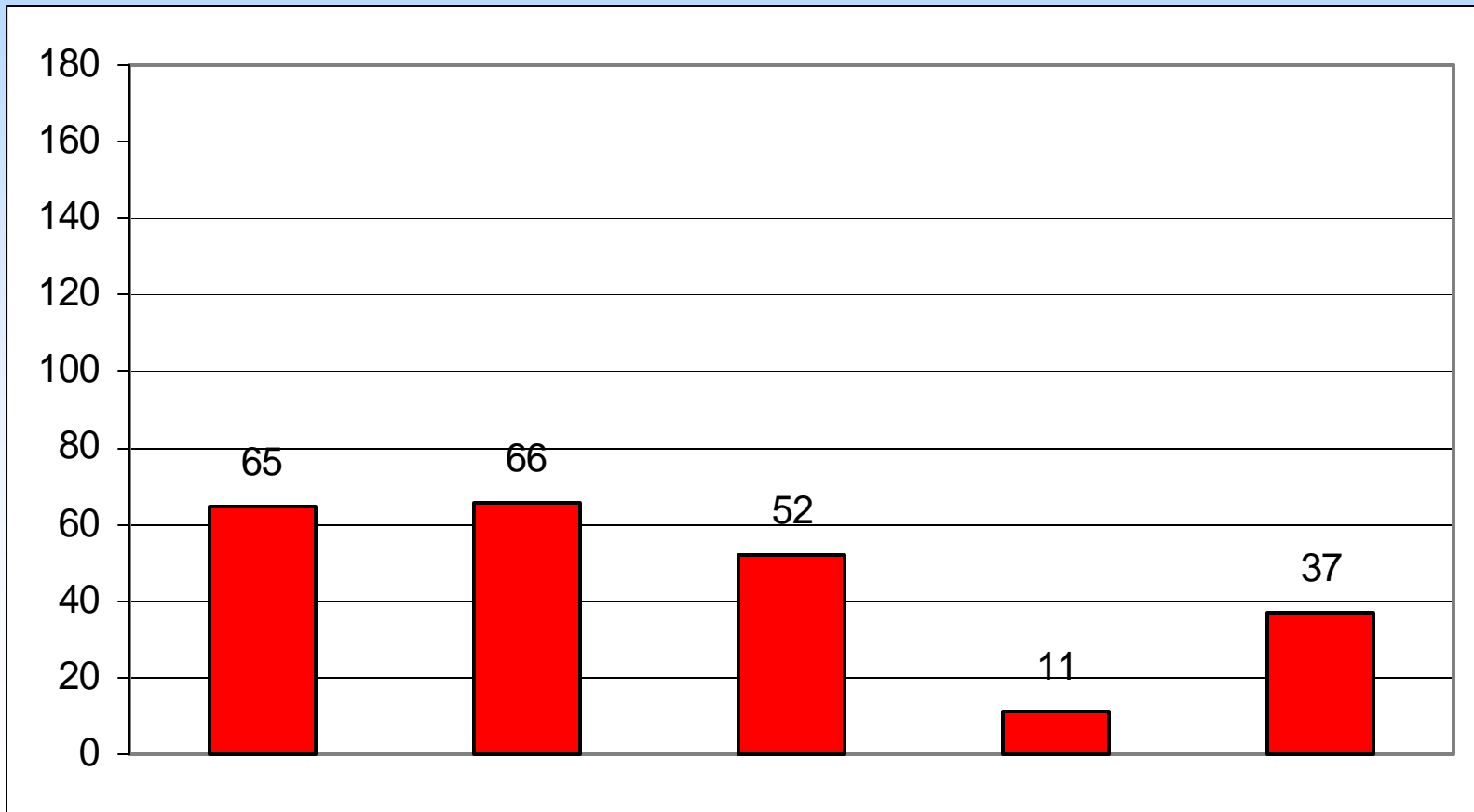
Religious Education Services

Moral Education Programs



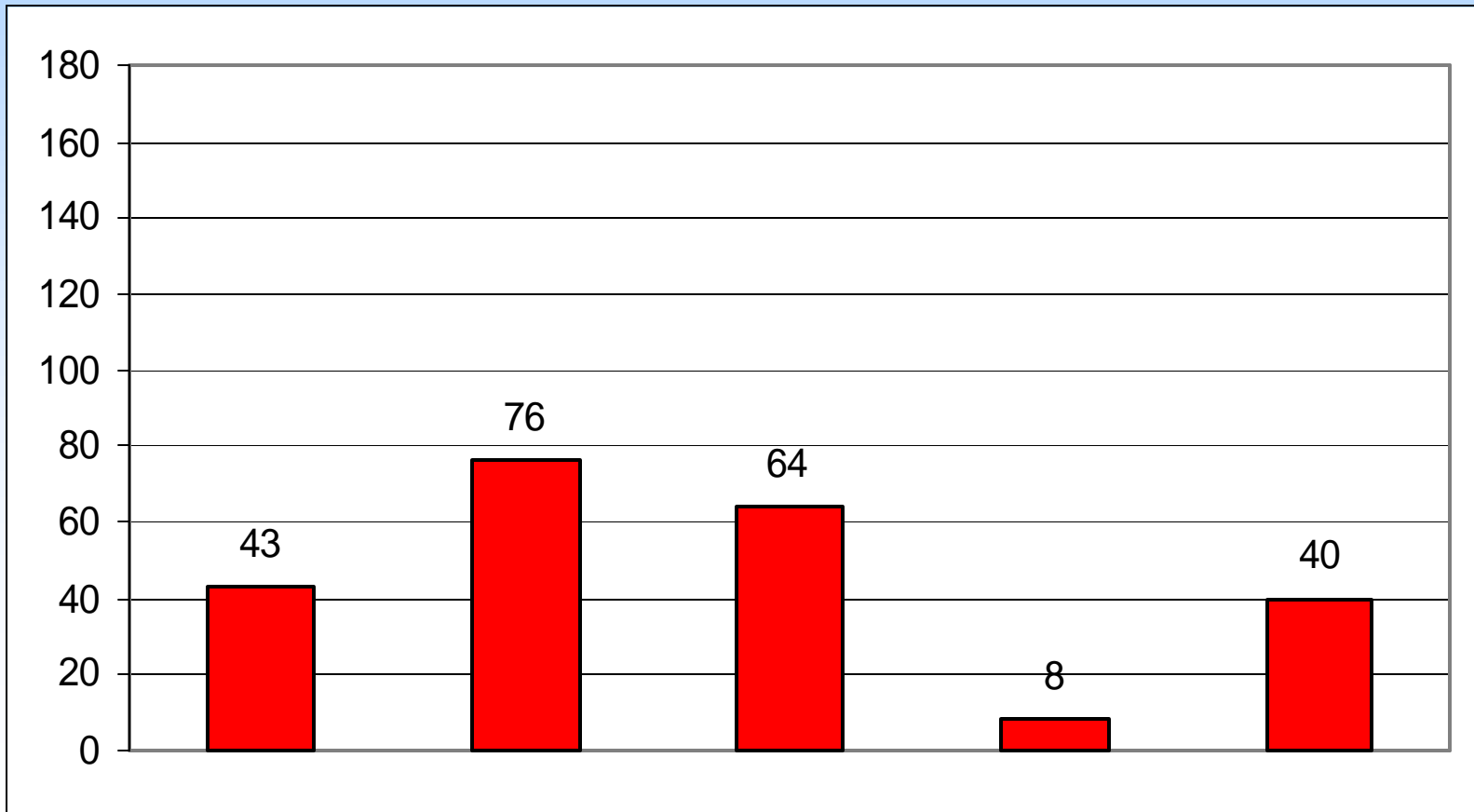
Counseling Services

Counselor training (mentoring)



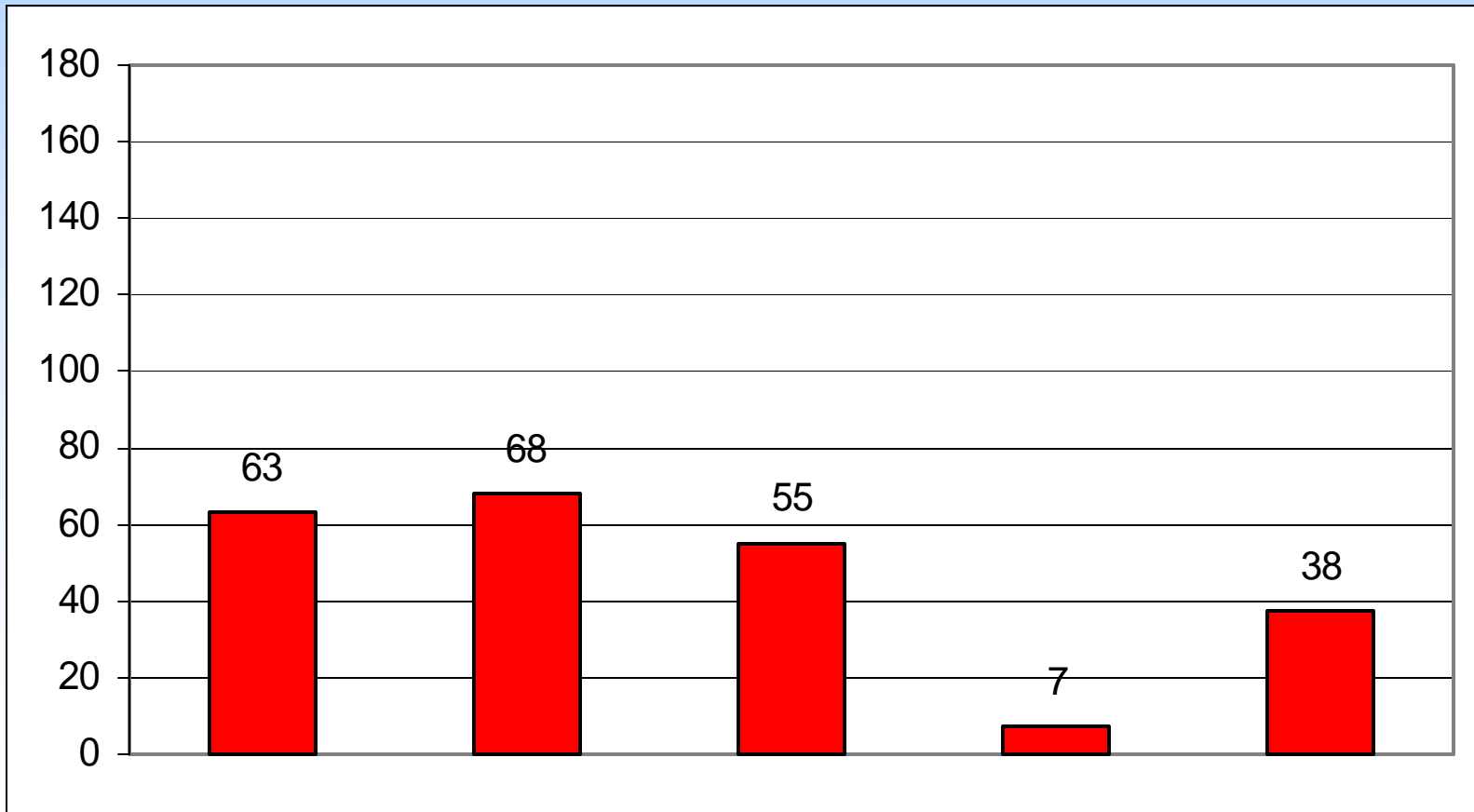
Counseling Services

Personal Counseling



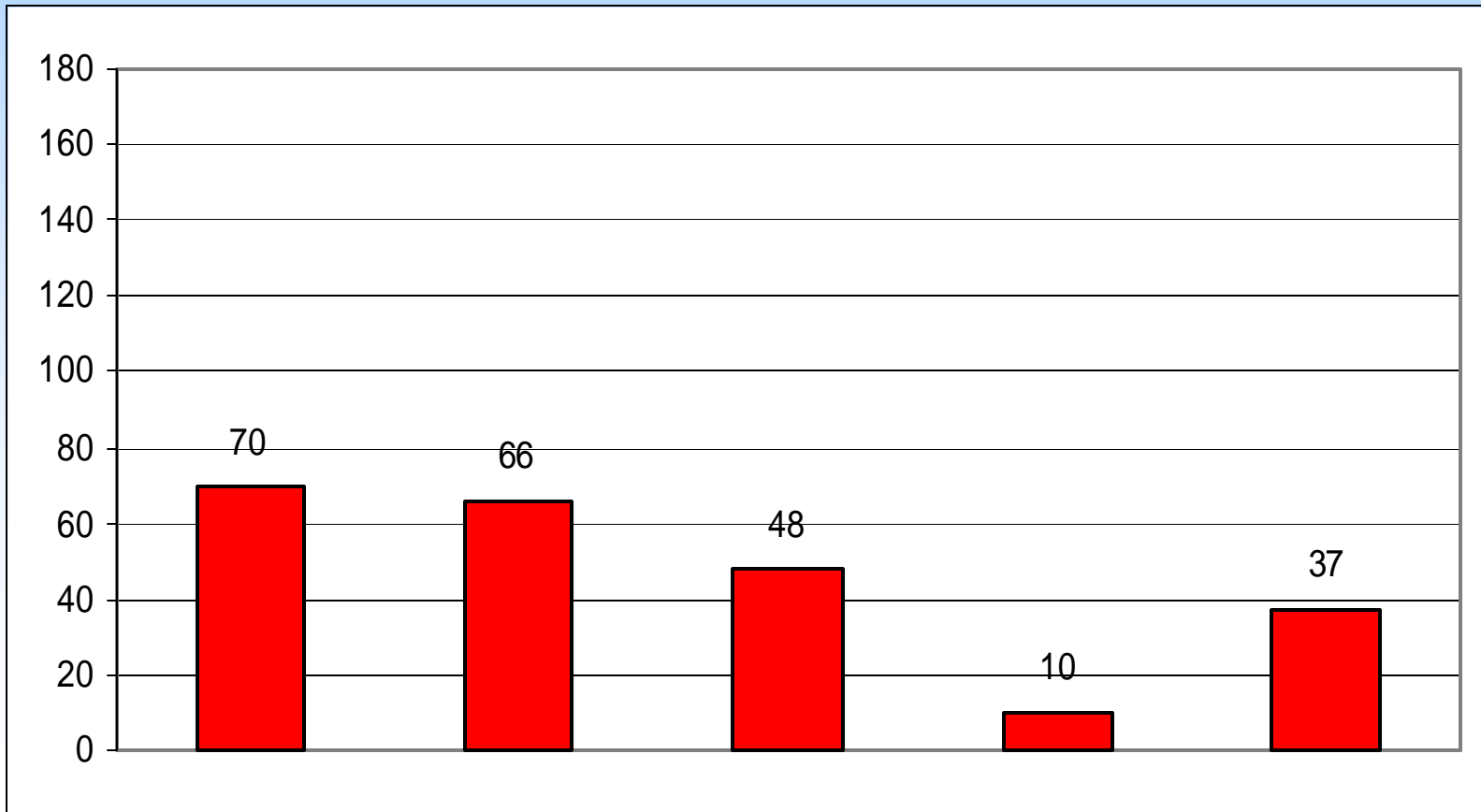
Counseling Services

Marriage Counseling



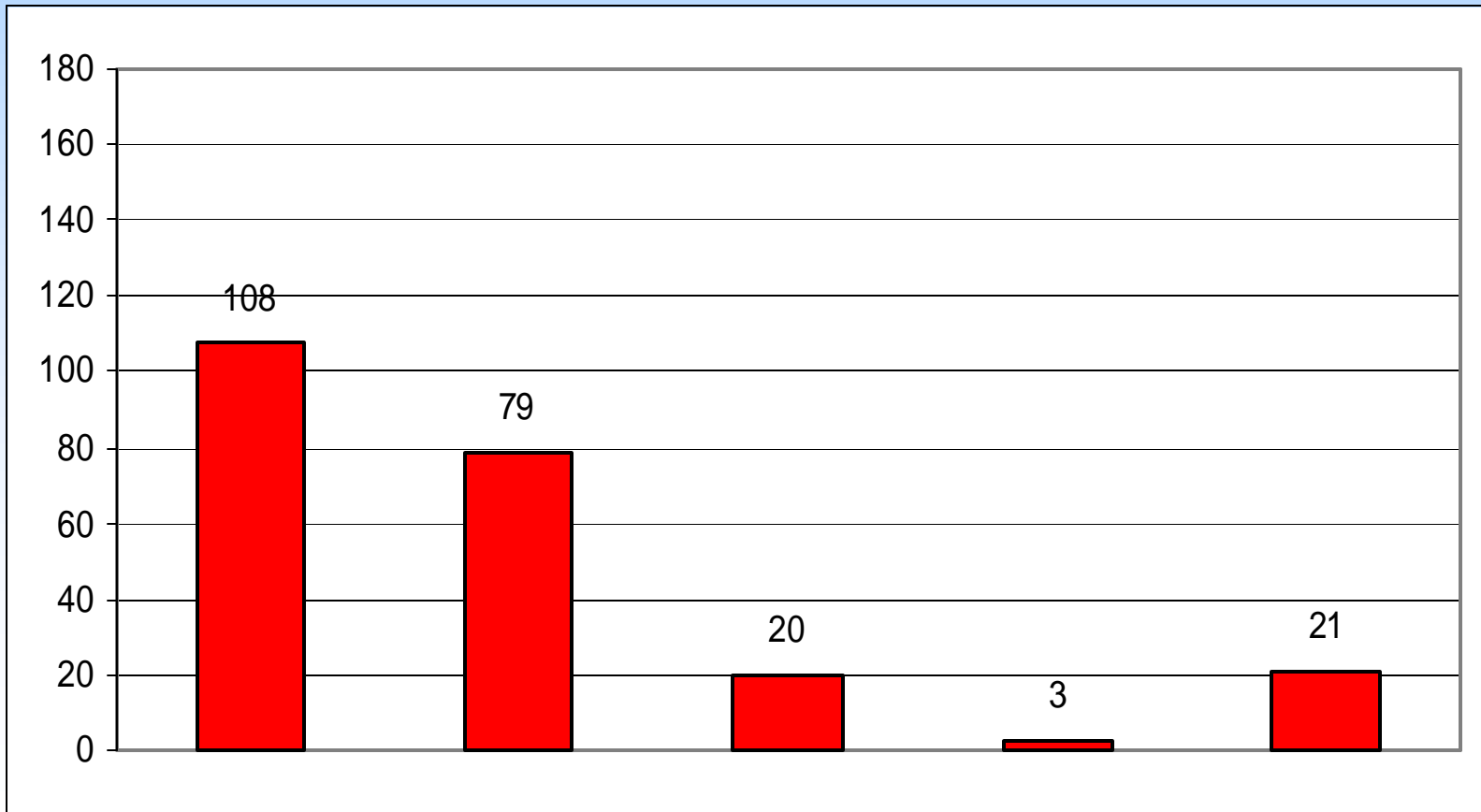
Counseling Services

Family Counseling



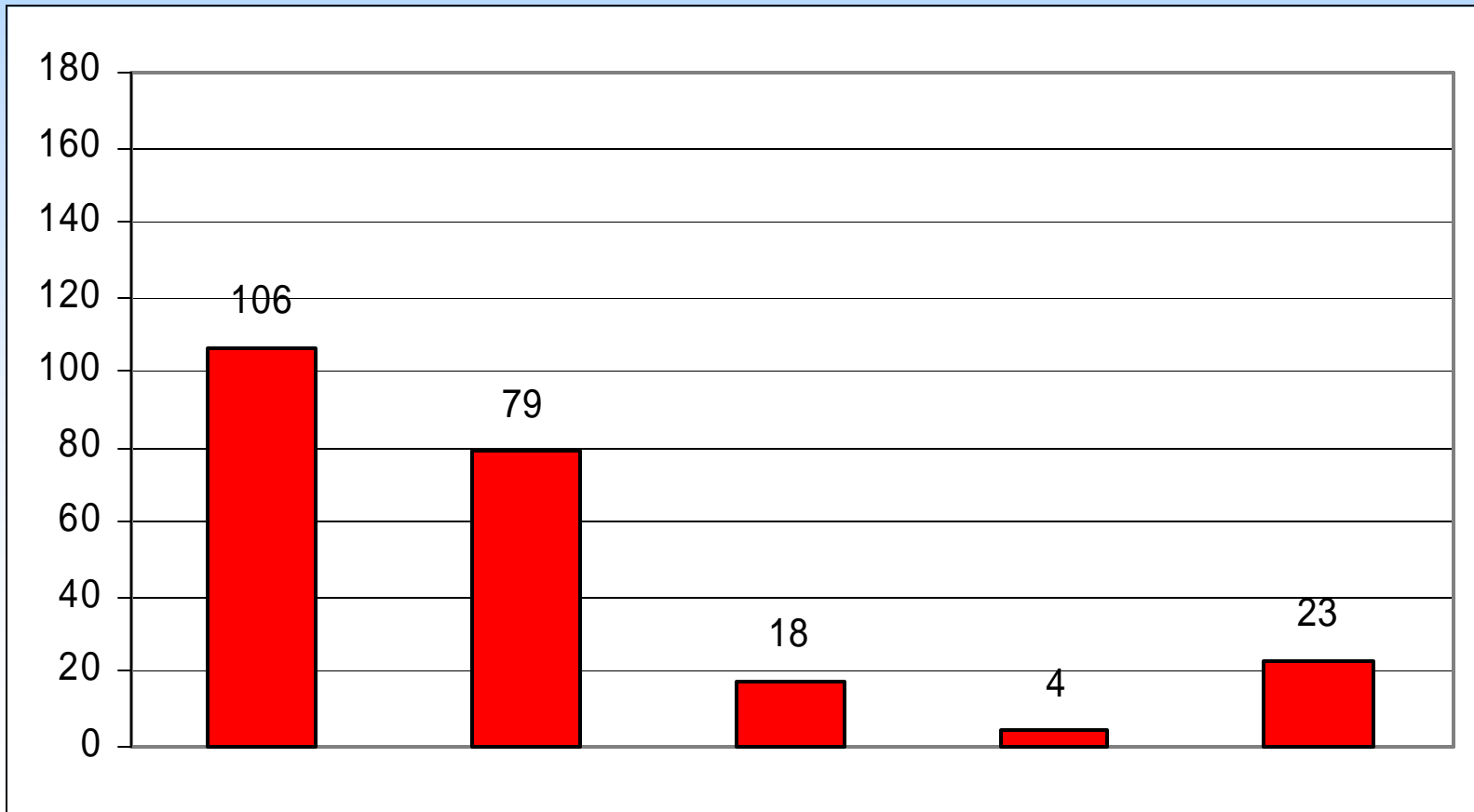
Information Services

Maintain a Membership Directory



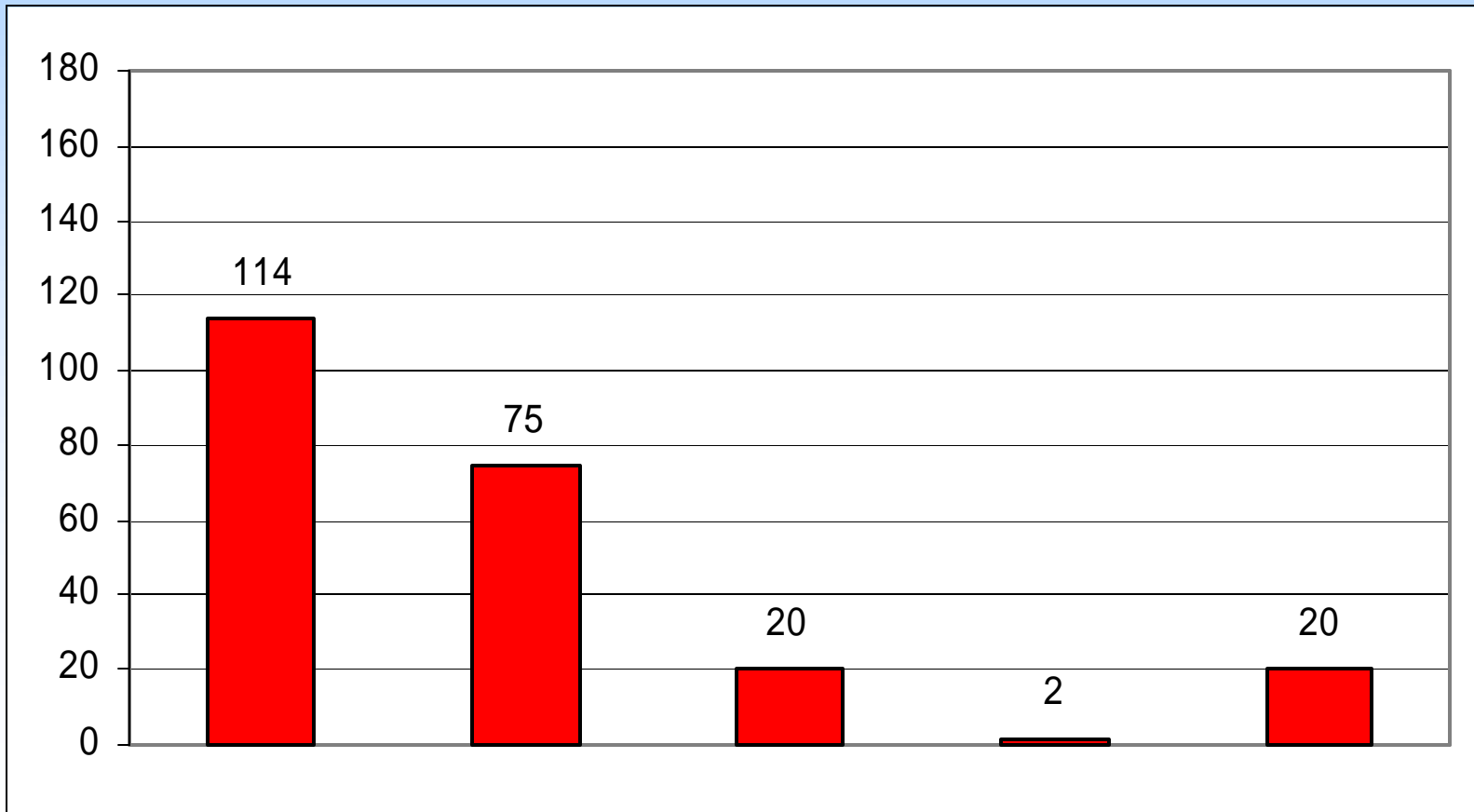
Information Services

Maintain a Directory of Services



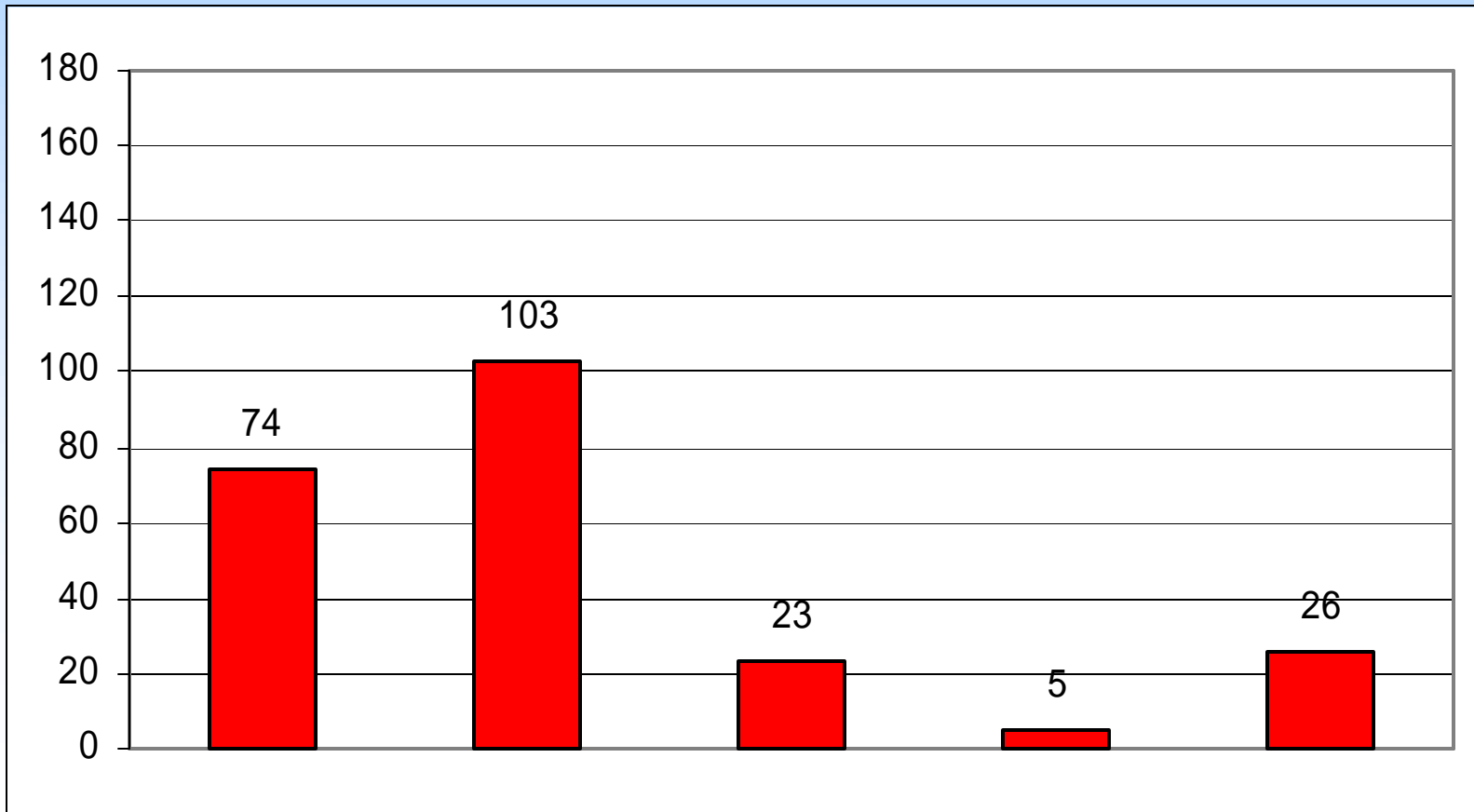
Information Services

Maintain a Calendar of Events



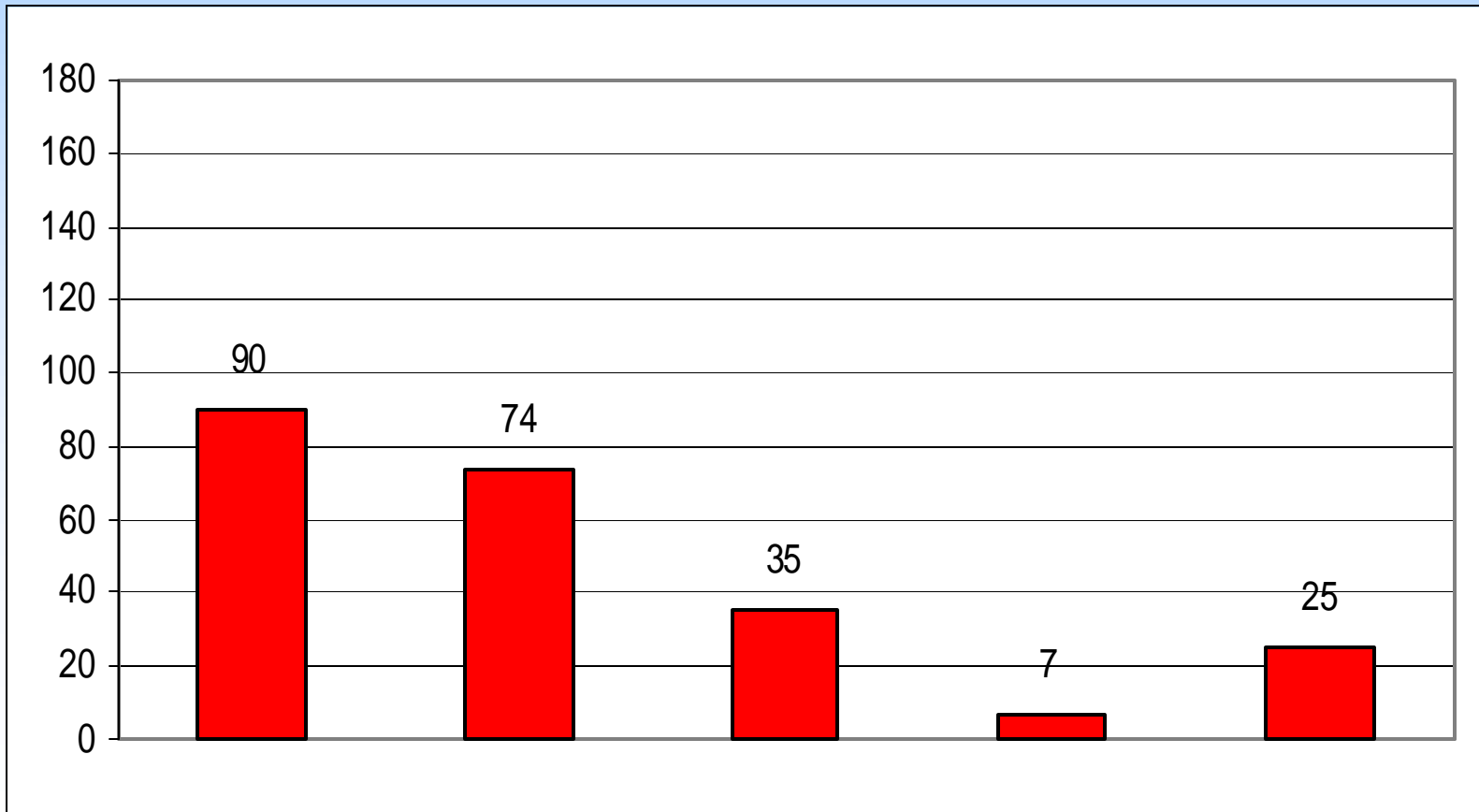
Information Services

Publish Newsletter on Grassroots Campaigns



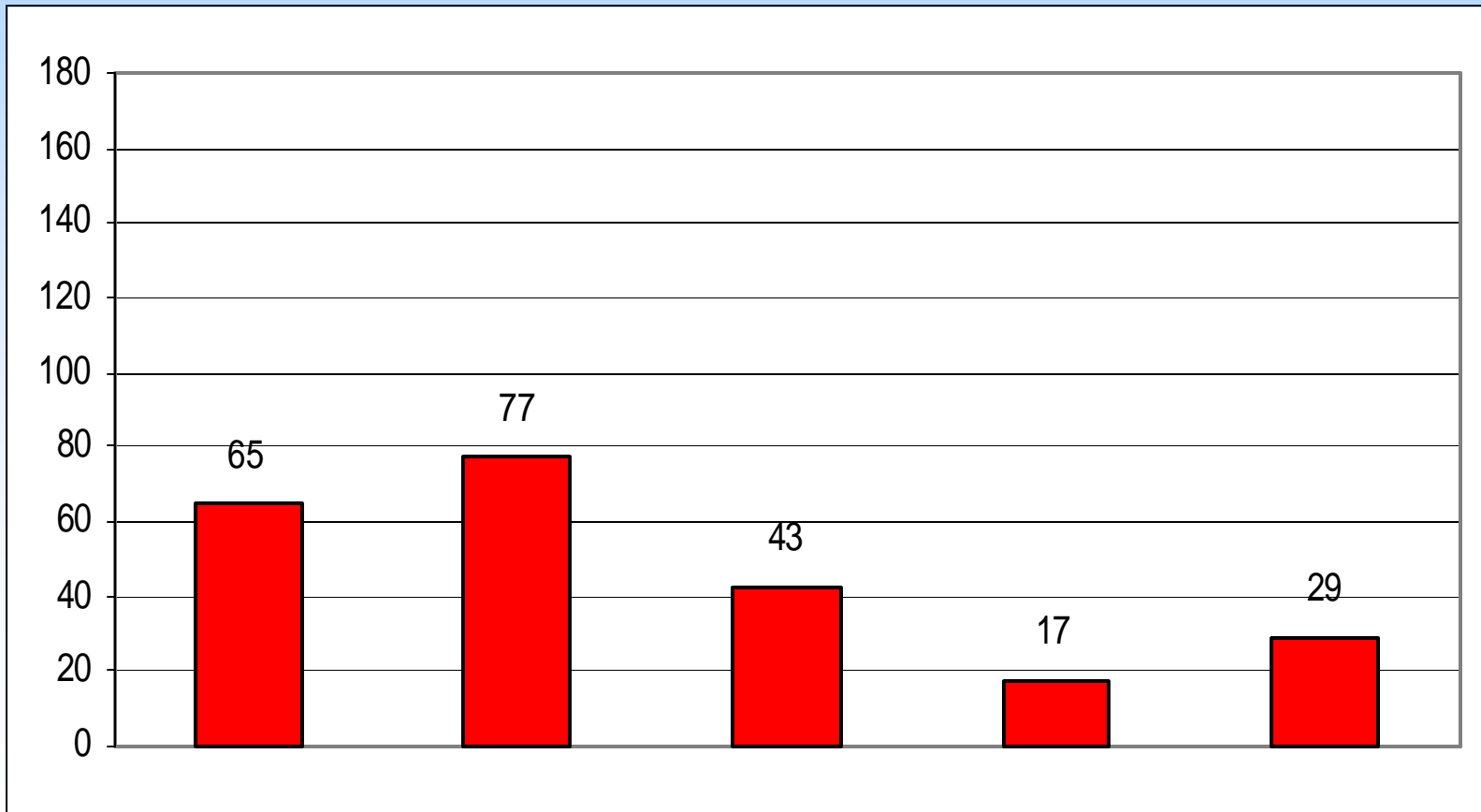
Information Services

Provide data on colleges Unificationists are attending



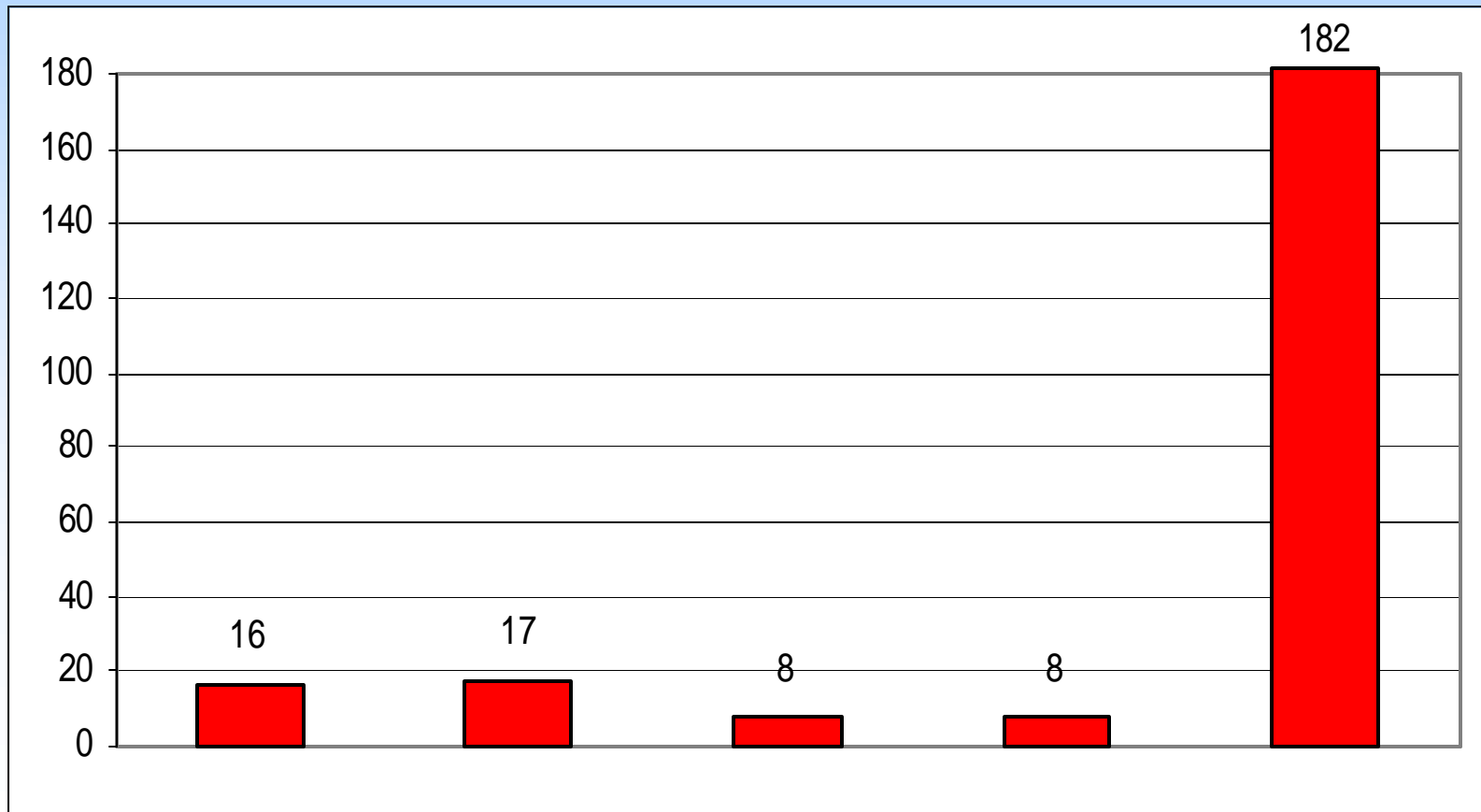
Information Services

Publish info on international homestays for students



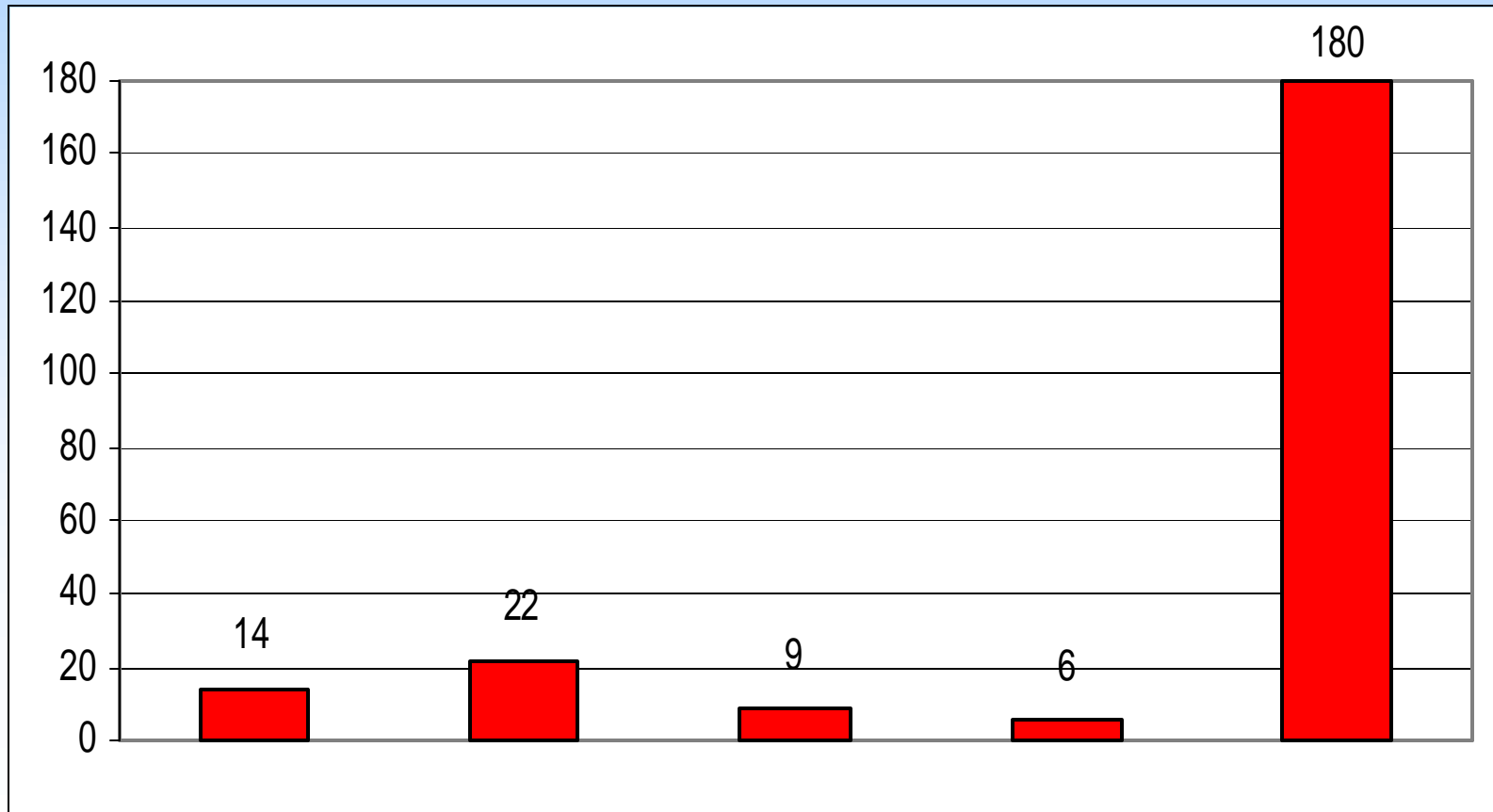
Strengthening Communication

Hotlines & Referral Assistance



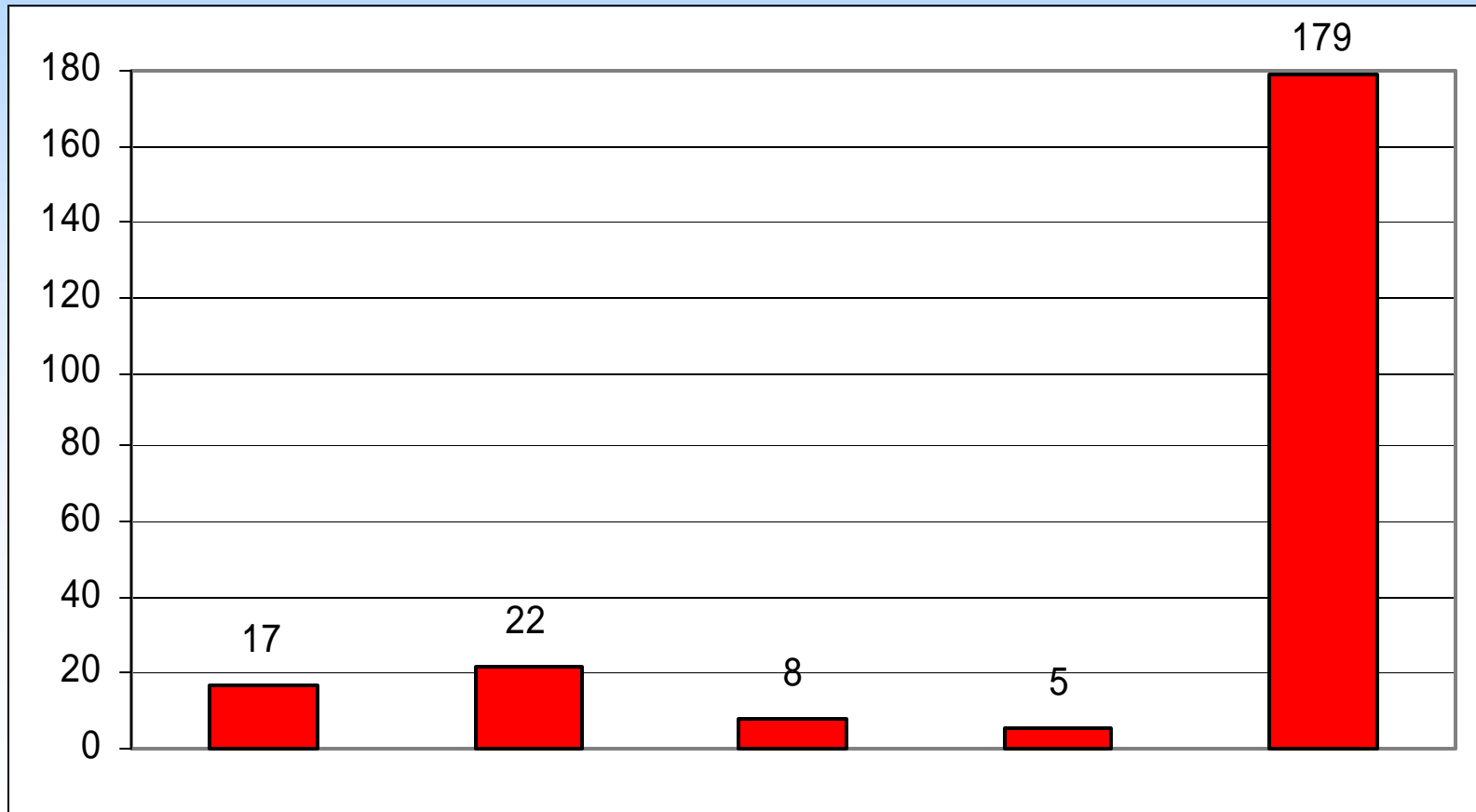
Strengthening Communication

Collect input on shared interests & concerns



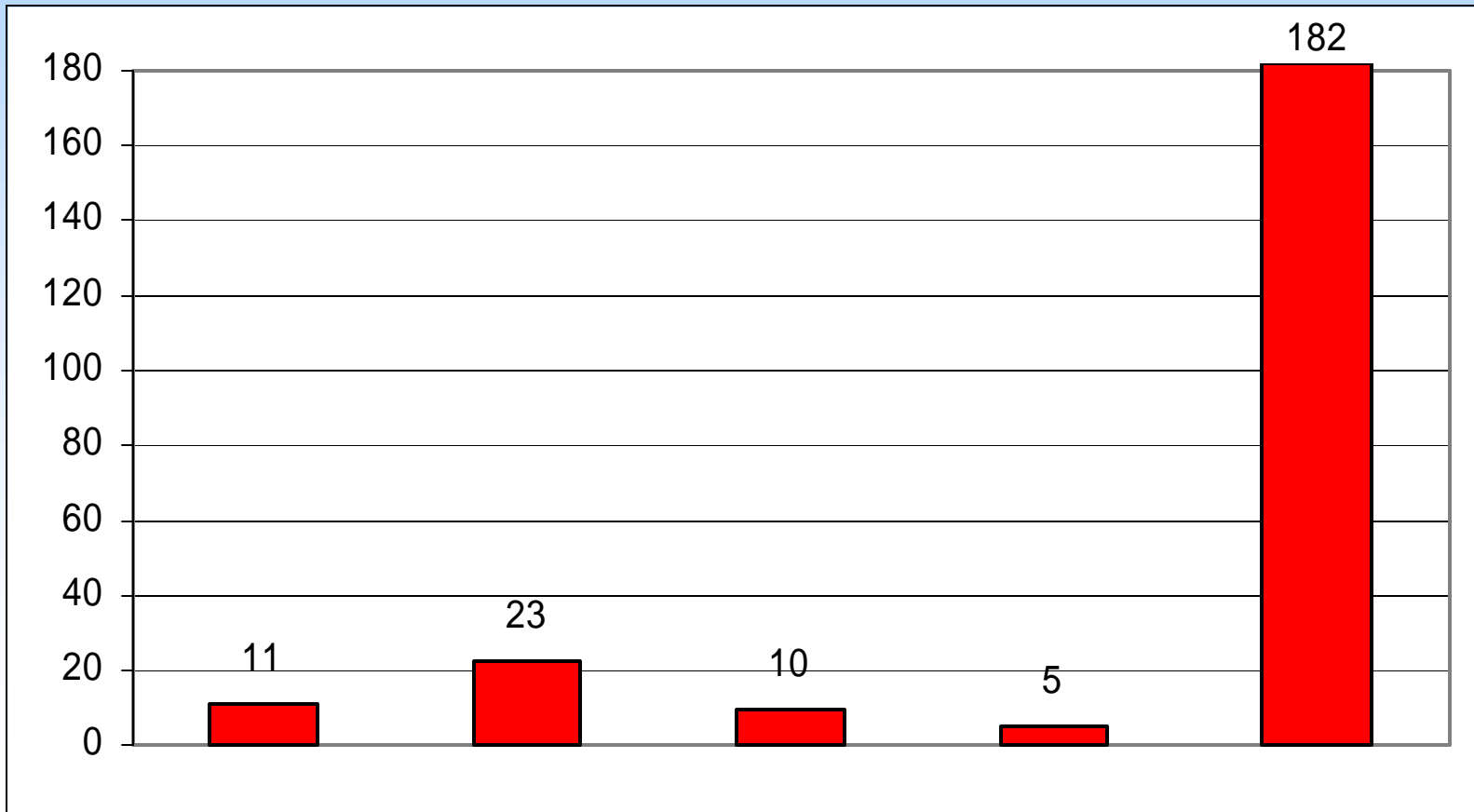
Strengthening Communication

Publish information collected



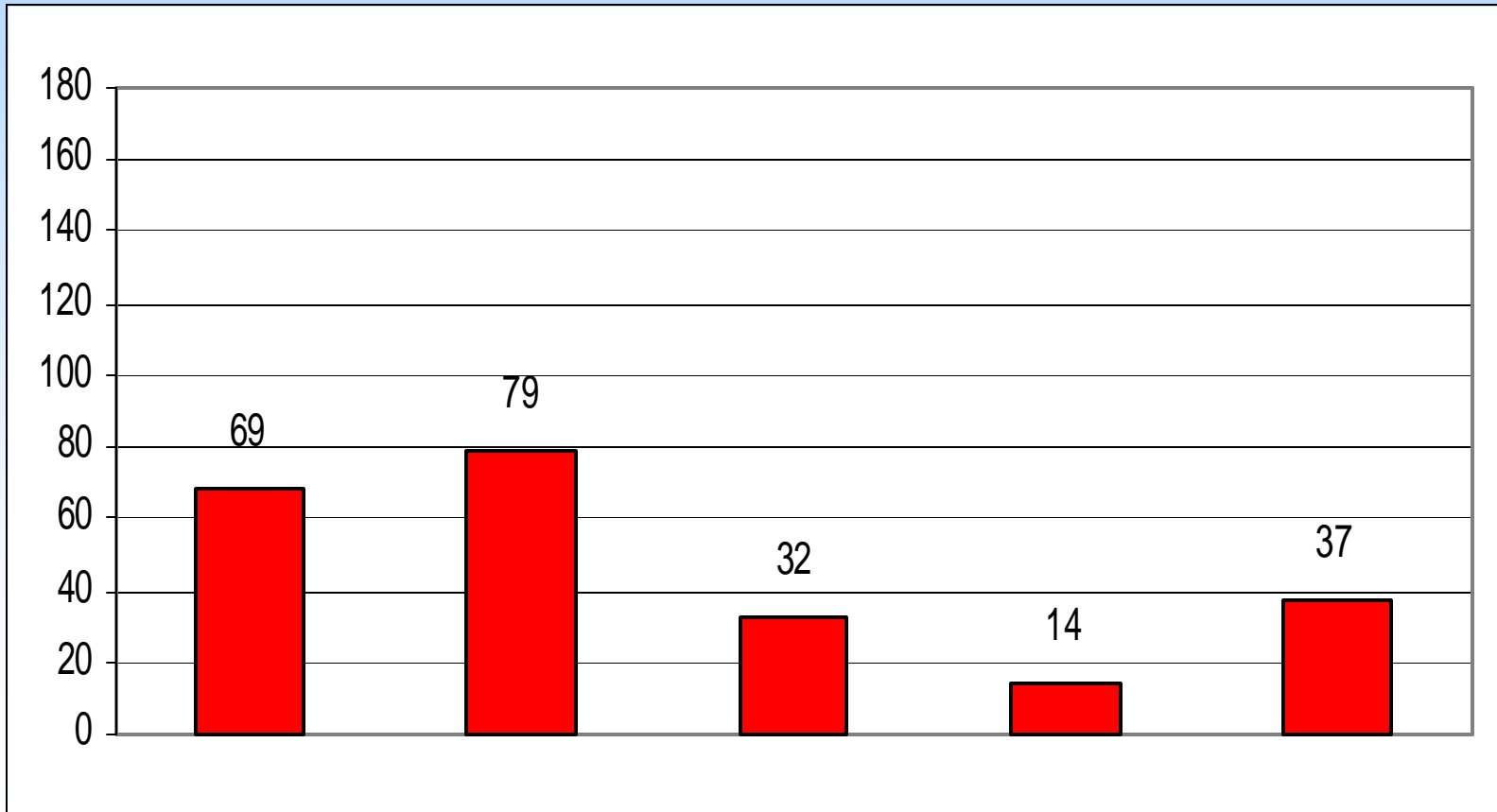
Strengthening Communication

Convene discussions & develop consensus around issues



Strengthening Communication

Develop Action Plans based on Consensus



2) Ways to Help Develop a Family Association

- Members already volunteering/working
- Interested in volunteering
- Interested in receiving training

Already Working and Volunteering

- Education – 99
- Youth Activities – 62
- Summer Camps – 45
- Counseling – 23

Can Volunteer In....

- Mentoring – 38
- Publishing – 17
- Web Design – 11
- Event Planning – 31
- Correspondence – 27
- Accounting / Bookkeeping - 9

Would like to be trained in...

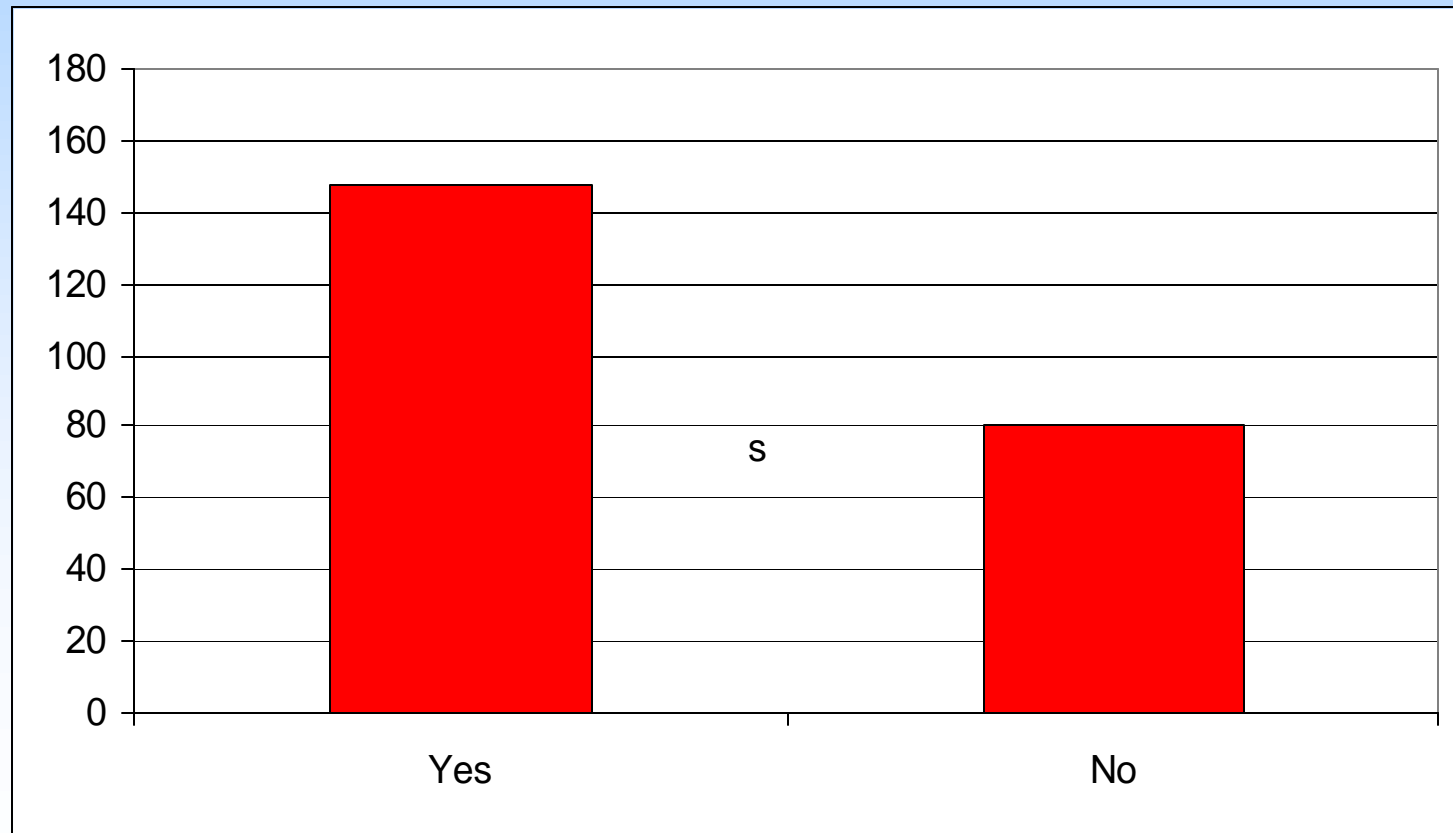
- Counseling members – 65, Counseling non-members – 49
- Education of members – 45, Educate, bless non-members – 55
- Public relations – 48
- Outreach to neighbors – 99
- Minister Outreach – 51
- Create guest-friendly services - 55
- Develop Local Ministries – 43
- Develop Campus Ministries – 18
- Develop Music & Arts Ministries - 41

Family Association Retreats

Family Association Retreat

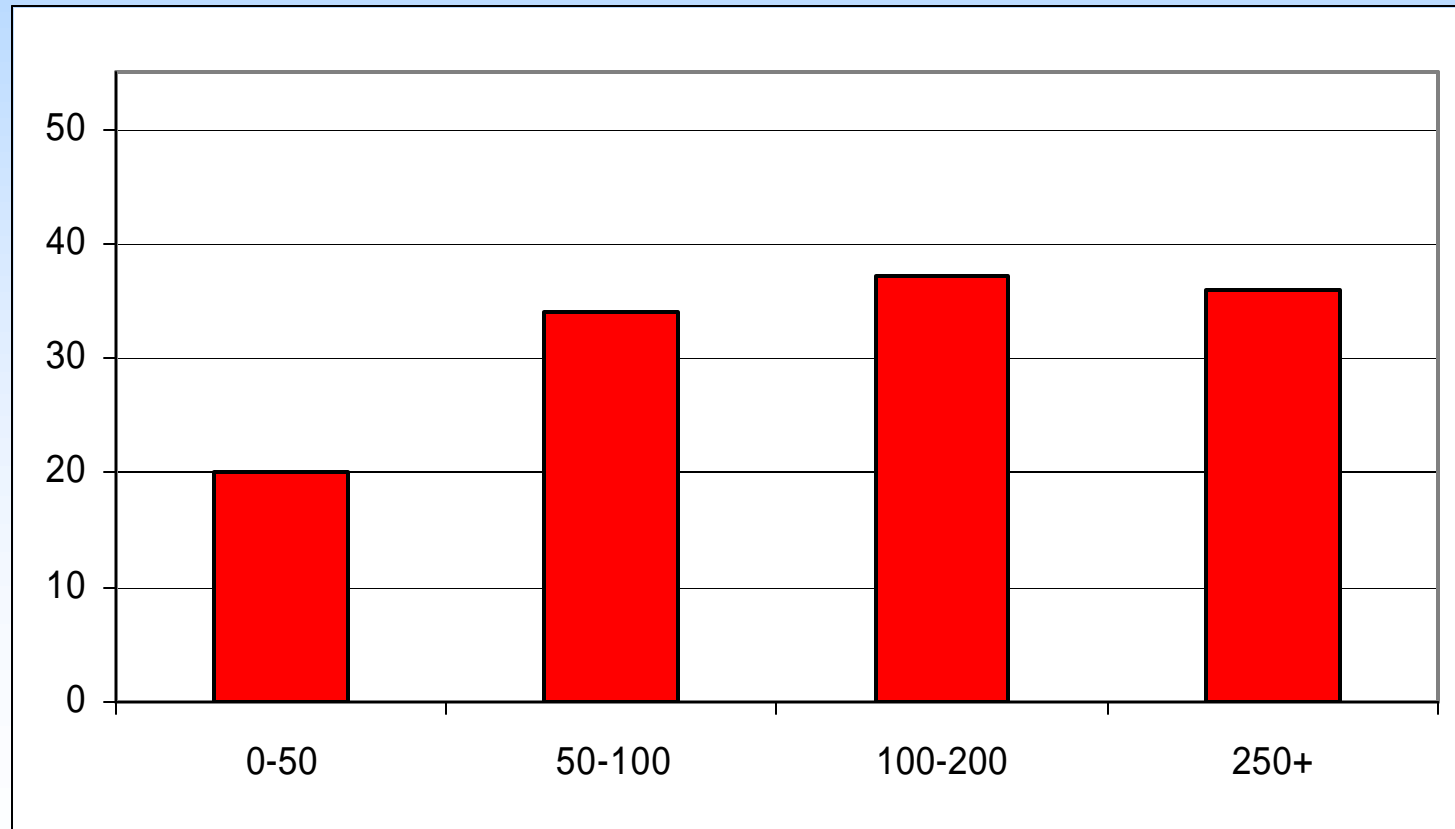
Members Interested in Attending

*note: "No" includes those who did not answer



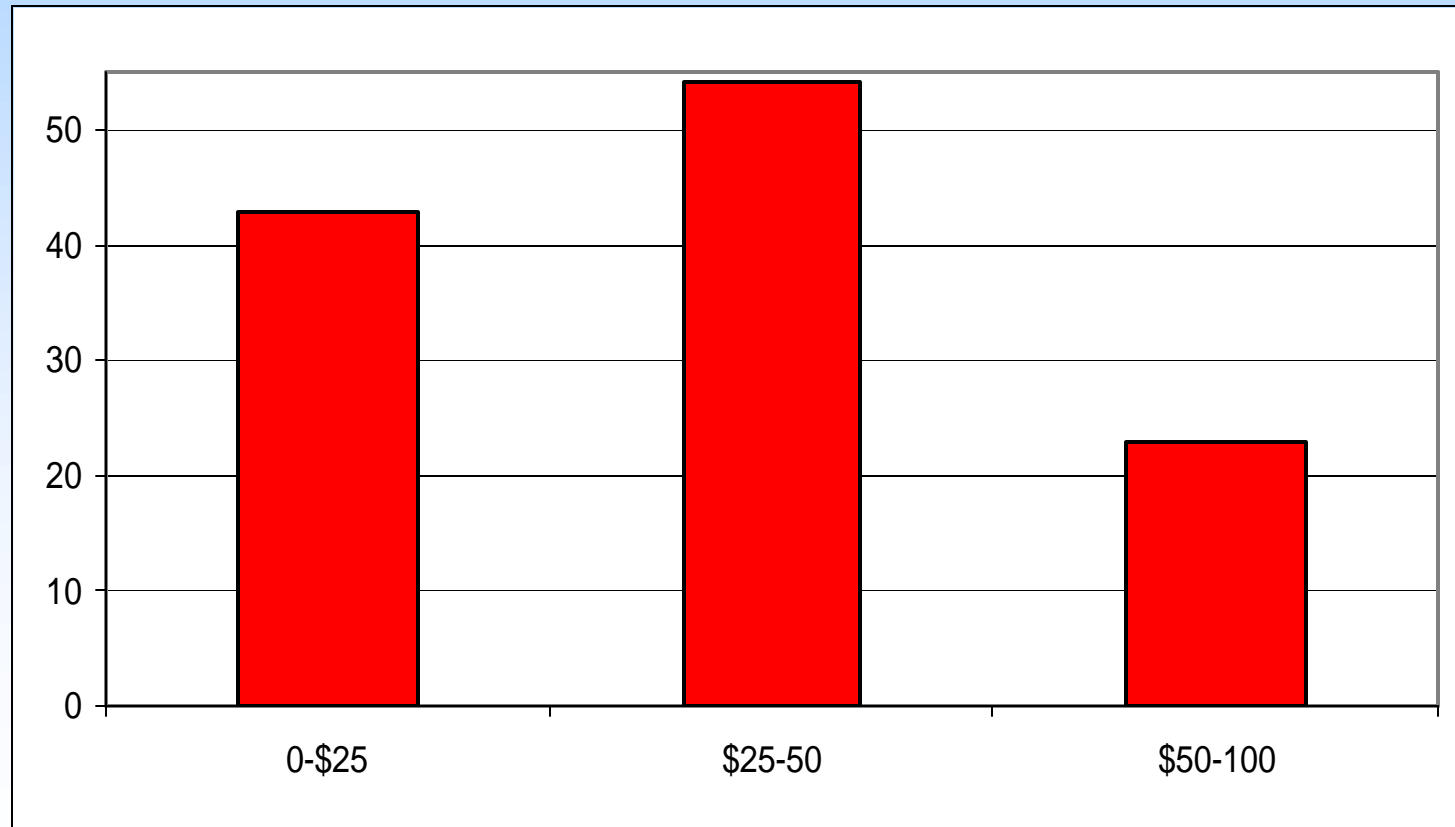
Family Association Retreat

Distance Willing to Travel



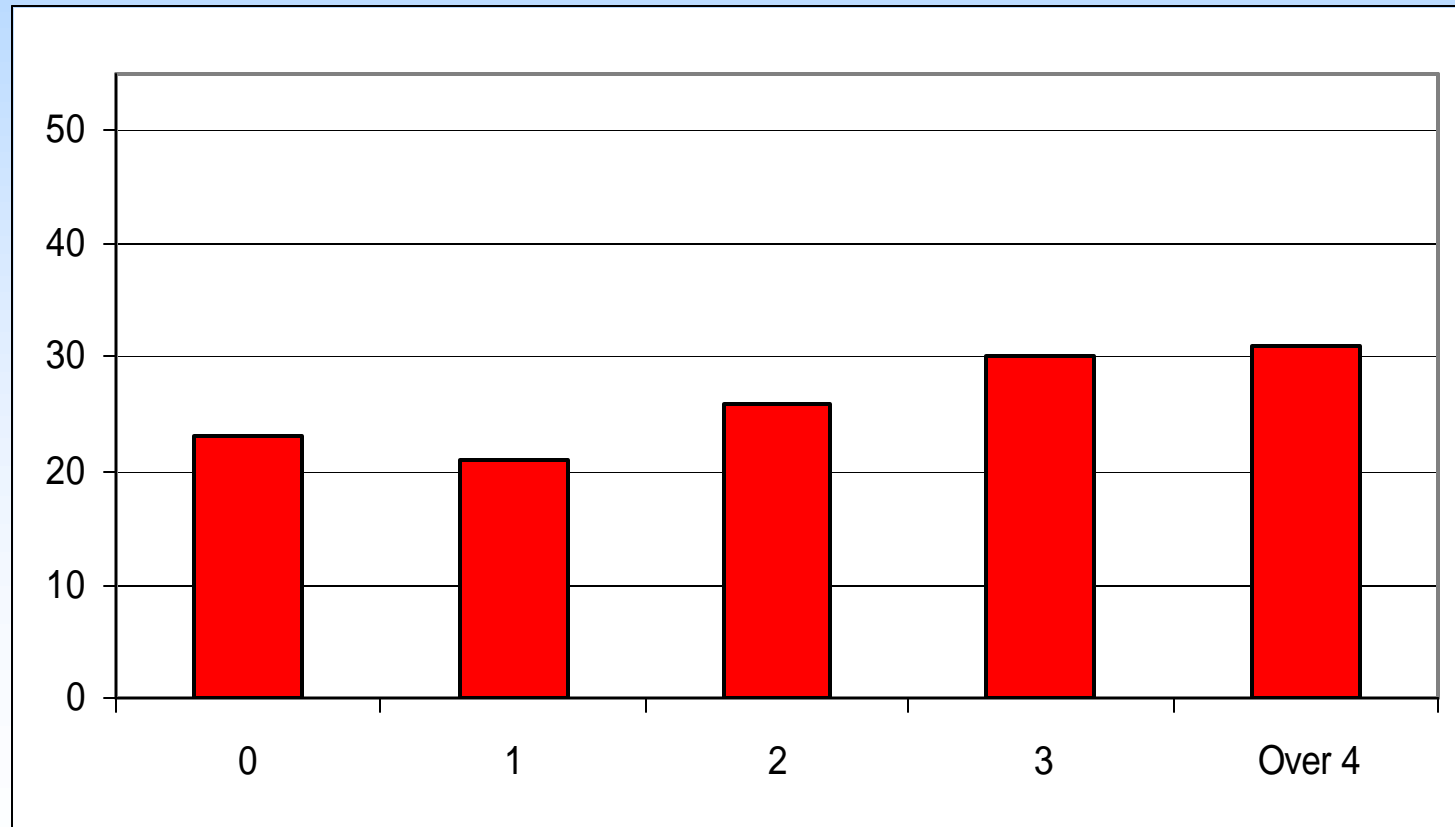
Family Association Retreat

Amount willing to pay, per person, per day



Family Association Retreat

How many children?

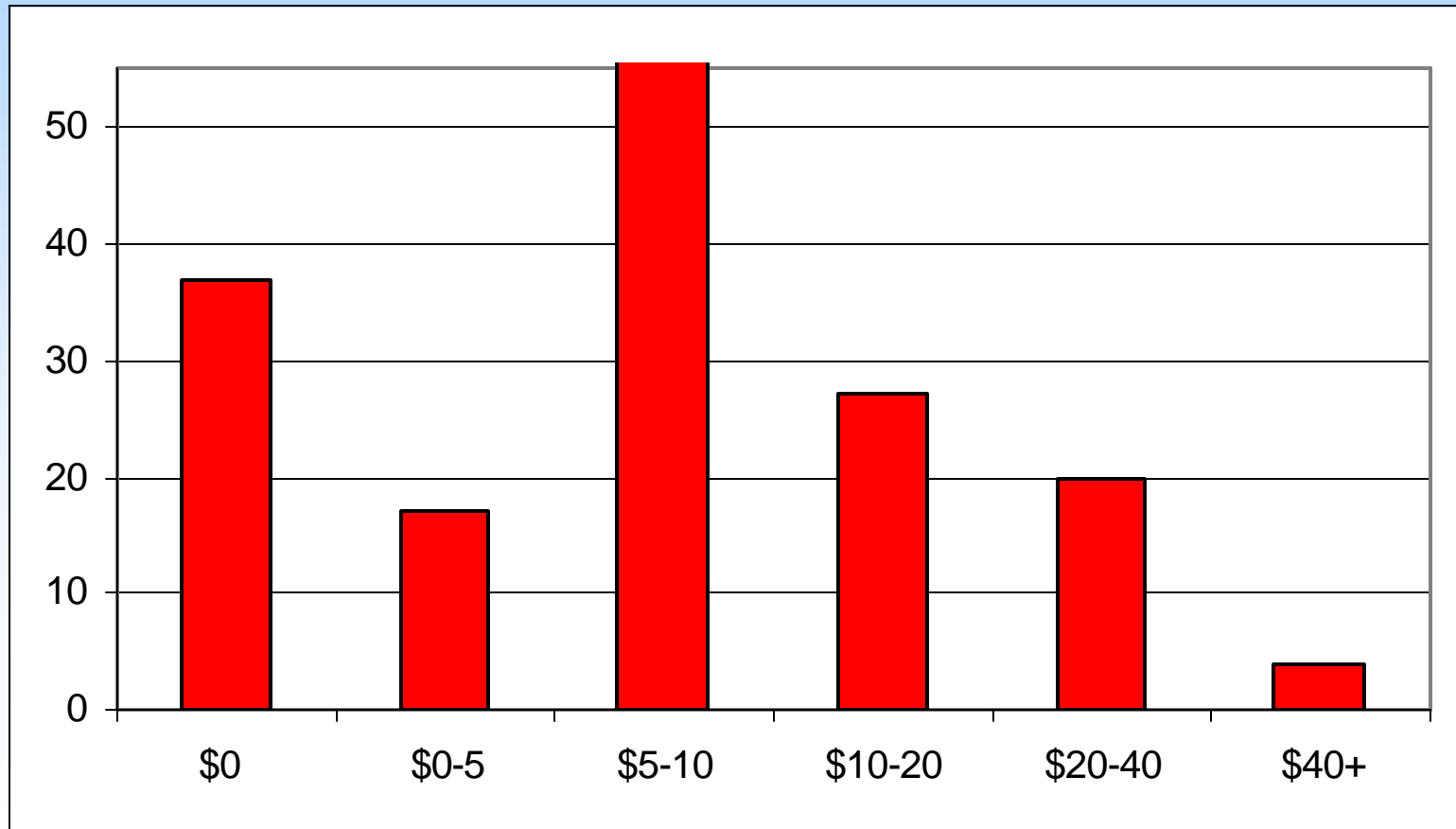


Funding the Association

Funding the Association

How Much Per Month?

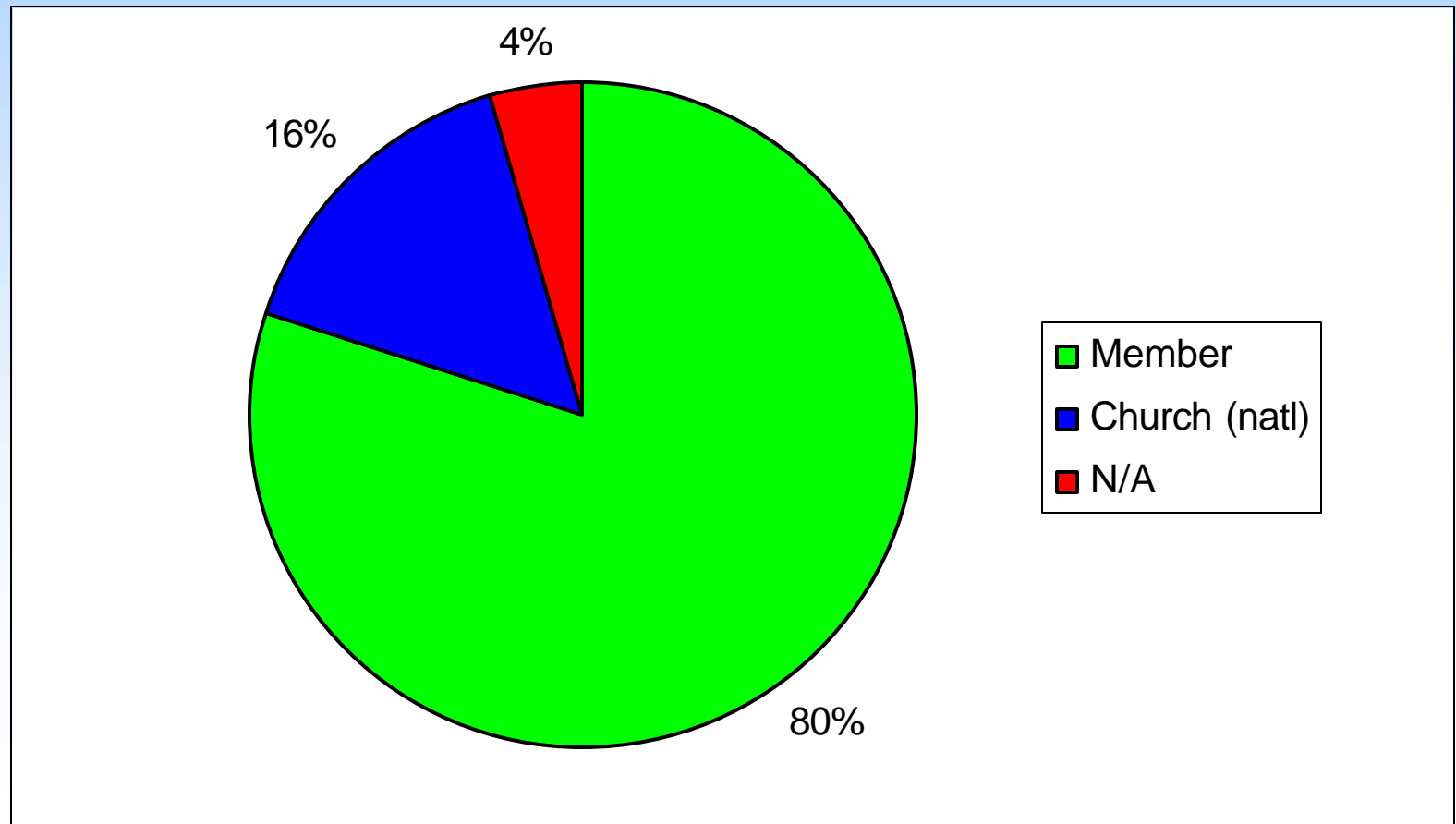
*these funds total approx. \$30,000/year



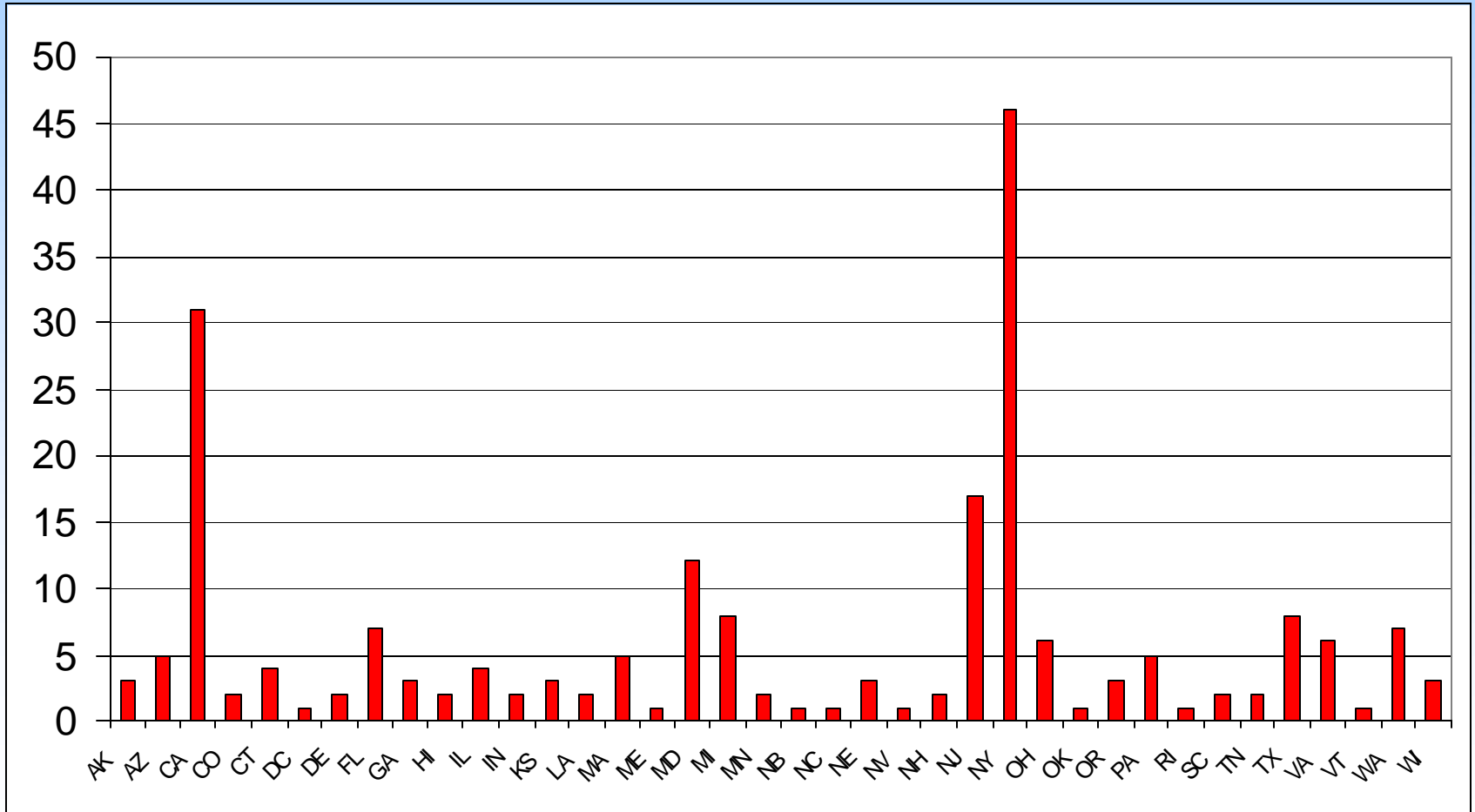
Funding the Association

Source of Funds

*does not include those who answered both



GEOGRAPHIC DISTRIBUTION



Comments

Comments

“We live far away from a church center and would appreciate the ability to "network" with other couples. It would be necessary that any organization acknowledge the real situation of couples, as opposed to the ideal standards. We need more help achieving those ideals, not judgment or guilt for what we know is our current failure. Thank you!”

Comments

“I think this is necessary because blessed families do need someplace to go to express their concerns. Currently, I think a lot of people are unsure about where to do that and where to tap into resources such as counseling, 2nd gen issues, youth issues, reblessing issues, etc. I think there should be AT LEAST one person in the country who's sole responsibility is being available for blessed families to connect them to resources they may need. That is the minimum. Beyond that a team of counselors should be available to travel if necessary to various parts of the country to counsel and educate members on blessed family issues.”

Comments

“Thank you for your initiative. It is great, it's needed to revive the BFA. For many years (maybe 8 years) we donated with our tithing to church a portion to BFA, is that money still there, is that the seed money that you have???? Our family is willing to help in any way possible. May God bless all your efforts.”

Comments

“I believe that in the process of forming the Family Federation for World Peace, the "Church" destroyed the support system for Blessed Couples... If the Blessed Family Association is to be a truly supportive organization, it must not be led from the top down, but set up as a organization that will provide resources to strengthen and support Blessed Couples.”

Comments

“Thank you for taking it upon yourselves to revive and create this type of association. I think it's important to keep in mind that couples may have different needs depending a lot on which Blessing they come from. For older couples, the main concern may be matching their children. For younger couples, personal and relational growth and development, child care issues, and financial security may be more relevant concerns. ”

Comments

“I think most of these activities are better and more effectively dealt with at the local or regional level, although a national group could help facilitate and initiate activities. However, matching, adoption and directory services could be an area where a national organization could have an immediate impact and tangible benefit. Thanks for taking taking the ball and running with it.”

Comments

“Both my wife and I work for Church businesses long hours and weekends. We currently don't have the time to volunteer. Financially we are struggling to meet our needs. We appreciate your understanding our circumstances.”

Comments

“NORMA AND I HAVE BEEN INVOLVED IN BUSINESS FOR A NUMBER OF YEARS NOW, SHE IS SELF EMPLOYED AND I GOING ON 8 YEARS AS A MANAGER WITH CRACKER BARREL OLD COUNTRY STORES. CRACKER BARREL IS RATED AS AMERICA'S #1 FAMILY RESTAURANT THAT DOES NOT SERVE ALCOHOL. AS A GENERAL MANAGER MY INCOME IS SUBSTANTIAL AND I WOULD BE AVAILABLE TO EDUCATE OTHER MEMBERS IN THE FOOD BUSINESS.”

Comments

“Top comment: I'm not sure why I'm not your letterhead I have more qualifications than 3/4 of the people on the letterhead. I've been through all the problems + won!”

...

(this is the only form that was sent FEDEX to meet the deadline)

Comments

“There is great power in getting blessed families together beyond regional boundries. We only interact with couples in our region. This limits our ability to maintain friendships and prevents our kids from getting to know other blessed children. Thank you for this effort”

Comments

“It is too late for the counseling that was needed for our family and second generation, except our youngest maybe.”

Comments

“I've got mixed feelings about this. I'm no longer active in the church, having retired myself from it in some disgust.

So NOW you're thinking about this? A bit too little too late isn't it?

In many ways I'd like to rejoin the spiritual community I'd dedicated my life too, but not if it will be in the least under foreign authority figures, and if there is no public accountability for the use of funds. Not if its the same old same old. What have you to say to this?”

Comments

“Be certain to do what you say you will do. So far so good. I appreciate the survey. I expect continuing feedback on the progress and process. Thank you.”

Comments

“More attention to match childless Blessed couples who want children with Blessed couples who want to offer a child. Suggest an international network.

Divine Principle Academy is very successful here in Atlanta. I would suggest this program by adopted throughout our church.”

Comments

“God speed, I hope you can make this work. I think the future of the American Movement depends on this or something like this that puts more emphasis on Blessed Families and their needs.

However, so many times I have gotten my hopes up for something like this only to find that focus and direction changes and all is forgotten. Forgive me if this time I take the wait and see approach.”

Comments

“It seems that somehow BFA should be able to work through the local church structure, not separate. However there are those who live far away from a church center.”

Comments

“Every city where there are 20 families or more should have a BFA representative - who doesn't do anything else (meaning they are NOT the regional director, state leader, WFWP president, youth pastor, etc., etc.)”

Comments

“need to address the needs of those who wish to adopt/those who have a child they are no longer able to care for.

make it clear which aspect/service of the BFA our contribution will go to.

How about fundraisers similar to those done by PBS, an item of memorabilia for a specific amount. Let's learn from Mr Walton of Wal-Mart, numerous small amounts can add up to more than a few large donations.”

Comments

“We do not have any family in the U.S. Being in the ripe old age of 77, what about Blessed Grandparents Association or whatever?”

Comments

“i odn't have a family yet, so i'm not very interested in your services at this time. however, i feel that there is a need for a blessed family support group, and here's my input:

GET MORE JAPANESE MEMBERS ON THE ADVISORS AND ORGANIZING COMMITTEE.
the american church is made up of more than white folks and a few korean leaders. japanese blessed families' needs and interests can be better served by having japanese couples in the committees.”

Comments

“This sounds good. Most church families that I know are on thier own, mostly because of finacial reality and survival. These questions should have been asked 20 years ago!! Lets do this. Also, lets deal with reality, so we can have time and energy for ideals and mission work.”

Comments

“with a member directory, it would be great if we had a family profile that includes the work or mission responsibilities/constraints of the parents so we could reach out to each other, in support or to commiserate with those in similar circumstances as ourselves.”

Comments

“Someone, or Guidelines for, 'Jacob children's' matchings. Camia says the ones she knows don't have a central point and feel ignored and unsure about this process for themselves.”

Comments

“It would be refreshing to be run by Americans.....”

Comments

“At this point, we have a dismal record of bequeathing the tradition of the Blessing to our 2nd gen. Approximately 80% of 2nd gens 20 and over (in America, Asia and Europe alike) have broken Blessings, were never Blessed and are, for the most part, disaffected from the Church. I believe this problem is our number one priority. We need to look this crushing reality directly in the face and determine what we will do as an association of Blessed families to stop this alarming trend.”

Comments

“Groups that need to be added (to volunteer areas): Families who lost their spouse are increasing/ counseling and support are definitely needed, Parents who lost children”

Comments

“This should be a serious organizational attempt. To participate in activities like this will require time. I for one, do not have time to waste. I would welcome the opportunity for participation but only if this is a serious, viable, structured, long term effort. Governance by an elected board...etc. ”