

- 1. Portugal** - Lisbon  
11th July 1965
- 2. Spain** - Madrid  
13th July 1965
- 3. UK** - London  
15th July 1965
- 4. Norway** - Oslo  
20th July 1965
- 5. Denmark** - Copenhagen  
22nd July 1965
- 6. Sweden** - Stockholm  
24th July 1965
- 7. Germany** - Berlin  
26th July 1965
- 8. Germany** - Frankfurt am Main  
29th July 1965
- 9. Germany** - Essen  
5th August 1965
- 10. The Netherlands** - Amsterdam  
6th August 1965
- 11. Belgium** - Brussels  
8th August 1965
- 12. Luxembourg** - Luxembourg  
9th August 1965
- 13. France** - Paris  
10th August 1965
- 14. Switzerland** - Geneva  
13th August 1965
- 15. Switzerland** - Glacier Des Diablerets  
13th August 1965
- 16. Liechtenstein** - Vaduz  
15th August 1965
- 17. Austria** - Vienna  
16th August 1965
- 18. Italy** - Rome  
19th August 1965
- 19. Vatican** - Vatican  
20th August 1965

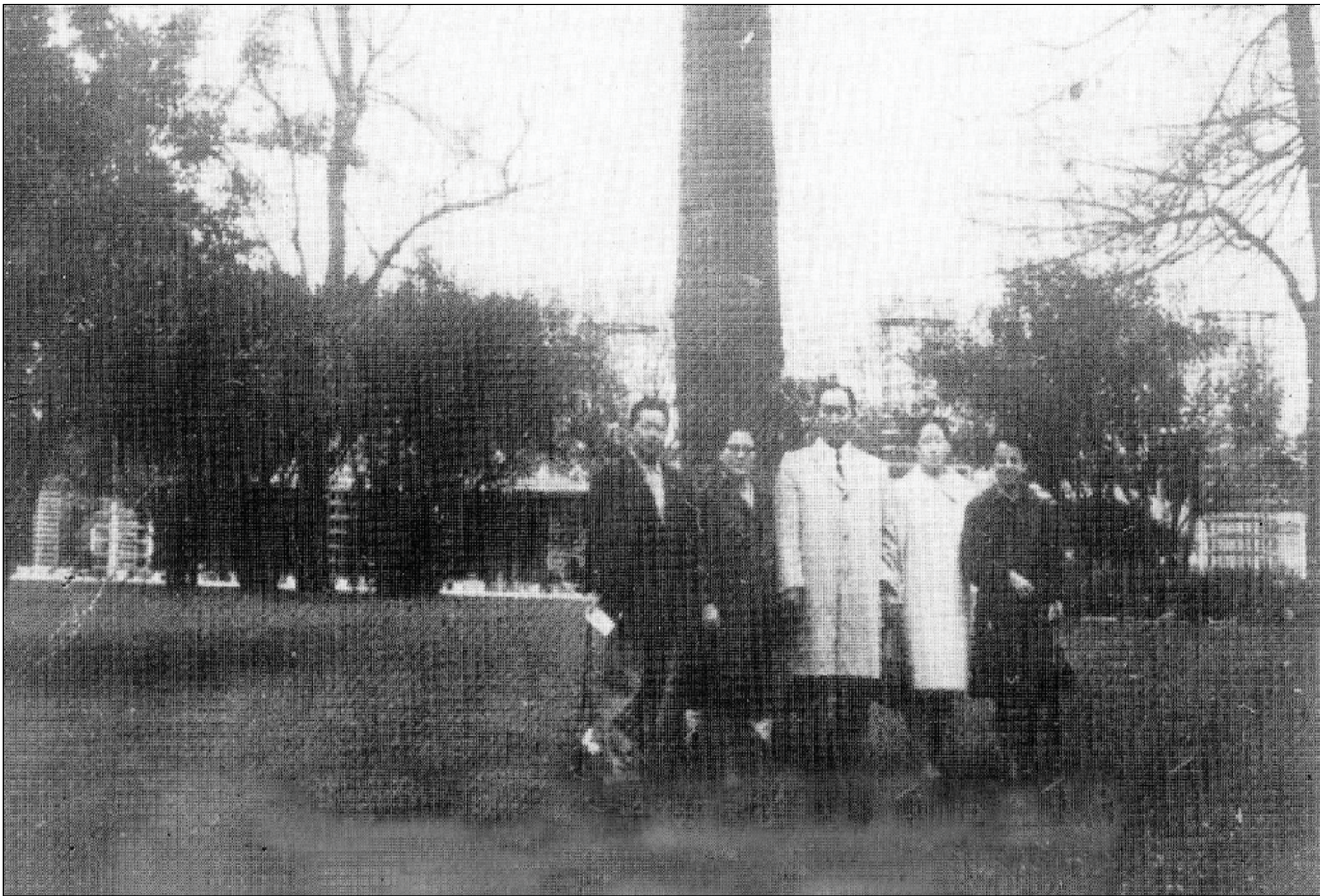
Establishment of the Holy Grounds  
Europe, 11th July - 20th August 1965



# Establishing European Holy Grounds



True Father arriving  
in Frankfurt  
Airport, welcomed  
by members,  
July 29, 1965.



**Portugal - Lisbon**  
July 11, 1965  
Park Eduardo VII



**Spain - Madrid**

July 13, 1965

It is situated in Park “El Retiro” de Madrid and it is the oldest tree in Madrid. It is called “ahuehuete” and is the national tree of Mexico.



## **UK - London**

July 15, 1965

10:20 a.m.

True Father chose as the Holy Ground, a particular plane tree in Kensington Gardens, which had been damaged by people carving their names into its bark. He later explained that he chose the tree because its damaged condition represented the state of the nation.

*Picture taken in 1972*



## **Norway - Oslo**

July 20,. 1965

2:20 p.m.

The Holy Ground in Norway is situated in the grounds of the Royal Palace in Oslo city center - home of the King and Queen of Norway.

The tree trunk divides into two main branches, about six meters above the ground, representing Adam and Eve.



**Denmark**  
**Copenhagen**

July 22, 1965

1.00 p.m

For many years, the exact location of the Holy Ground in Copenhagen remained a mystery. This changed when a postcard written by Mrs. Won Pok Choi was discovered, revealing that the Holy Ground was located in the garden of Rosenborg Castle. Although this discovery confirmed the general area, the specific tree under which True Father had originally consecrated the site was still unknown. This mystery was finally resolved on July 11, 2006, during a visit to Copenhagen by True Mother, who went to the park and identified the exact tree.

*Picture taken on  
January 1, 2000*



## Sweden - Stockholm

July 24, 1965

11:45 a.m.

Humblegarden, north-east side of statue of 'Linne'.

*On the left, the Holy Ground in 1965. At that time there were no members living in Sweden. On the right, 40 years later.*



### **Germany - Berlin**

July 26, 1965

Father first stood on German soil when he landed in Berlin Tempelhof at 13:50 on July 26, 1965. He blessed the first holy ground in Germany that same day in Tiergarten, near the Victory Column.



**Germany**  
**Frankfurt am Main**  
July 29, 1965  
Grüneburg Park



**Germany - Essen**  
August 5, 1965

Picture taken in March 1969 when True Parents both came on their second visit to Germany. The purpose of their visit was the blessing of 8 European couples in Falkenheim, Essen, on March 28, as part of the worldwide 430 couples blessing.



**The Netherlands  
Amsterdam**

August 6, 1965  
8.40 p.m.

*Picture taken in 1969*



**Belgium - Brussels**

August 8, 1965, 3.30 p.m.

Chestnut tree, about 100 meters south of the monument in the park across the king's palace.



**Luxembourg**

**Luxembourg**

August 9, 1965

4.30 p.m.

Oak bush on a hill north of the town, at a big, flat stone, about 100 meters downhill, towards the town.



**France - Paris**  
August 10, 1965  
12.40 p.m.

Wide walkway in the park  
around the Eiffel Tower  
located to the right, about  
200 meters south of the  
2nd stone vase.

*Picture above taken April 1969*



**Switzerland  
Geneva**

August 13, 1965  
10.30 a.m.

Largest tree in Parc  
Trembley, about 50  
meters south of a  
hill, at Chaussee de  
Maillebeau.



**Switzerland  
Glacier Des  
Diablerets**

August 13, 1965  
4.00 p.m.

A small hill below  
the 3rd cable-car  
station.



**Liechtenstein - Vaduz**

August 15, 1965

6.50 a.m.

Largest Tree on the parking lot on the west side of Eulestrasse, about 300 meters west of the bank of Liechtenstein.



**Austria - Vienna**

August 16, 1965,  
10:15 a.m.

Tree near the northwest  
exit of the Rathaus Park.



**Italy - Rome**

August 19, 1965

1.00 a.m.

Villa Borghese,  
cypress tree, near  
the Umberto  
monument and the  
St. Raphael Church.



**Vatican**

August 20, 1965

10.20 a.m.

Between the 1st and 2nd  
stone circle, on the south  
side of the Obelisk.