

# IAED USA Webinar: Impact of AI on Human Development - How AI Changes Us

Roger Wetherall  
July 15, 2025



## Universal Peace Federation's International Association for Peace and Economic Development The Impact of AI on Human Development: How AI changes us

**Tuesday, July 15, 2025 @ 2 - 3pm EDT (11am Pacific)**

A recent study by MIT researchers published in Time Magazine has concluded that the use of Large Language Models (LLMs) like ChatGPT have a significant impact on the way that users think and retain information. They also reported that "Over the course of several months, ChatGPT users got lazier with each subsequent essay, often resorting to copy-and-paste by the end of the study." Although this is not a definitive peer-reviewed study, it does raise important questions about the effects that the use of these tools will have on AI use in business, education and society.

The implication for business is that even if efficiency goes up, an increasing reliance on AI could potentially reduce critical thinking, creativity and problem-solving across the workforce. Our reliance on AI may lead to a lack of creative thinking and a homogeneity in thinking that is based on the data sets that these models are trained on rather than true innovation.

**Shafik Bahou** has had a varied career in both business and academia and now leads his own consulting and RandD company specializing in the intersection of human development, emerging technologies, and business systems. His presentation will look into the implications and impact of AI in society from the perspective of how it changes us, our relationships with others, and our relationship with the natural world around us.

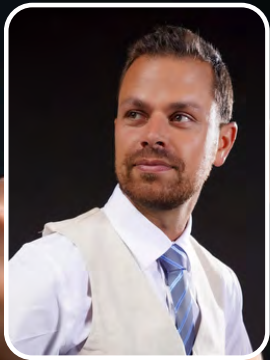
Please join **Shafik Bahou** and **Christopher Wright** for this engaging and important discussion.

**Register here now:** [us-upf-org.zoom.us/join/7AckkQg](https://us-upf-org.zoom.us/join/7AckkQg)

**Tuesday, July 15, 2025 @ 2 - 3pm EDT (11am Pacific)**  
*see flyer attached*

# The Impact of AI on Human Development: How AI changes us.

Tuesday July 15, 2025, 2 – 3 PM EST



**SHAFIK N.  
BAHOU**

Founder of  
SynaQuest



**CHRISTOPHER  
WRIGHT**

Founder of the AI  
Trust Council



**ROGER  
WETHERALL**

Moderator  
US Coordinator, IAED  
UPF-USA, Executive  
Director – CT

A recent study by MIT researchers published in Time Magazine has concluded that the use of LLMs like Ghat GPT have a significant impact on the way that users think and retain information. They also reported that “Over the course of several months, ChatGPT users got lazier with each subsequent essay, often resorting to copy-and-paste by the end of the study.” Although this is not a definitive peer-reviewed study, it does raise important questions about the effects that the use of these tools will have on AI use in business, education and society.

The implication for business is that even if efficiency goes up, an increasing reliance on AI could potentially reduce critical thinking, creativity and problem-solving across the workforce. Our reliance on AI may lead to a lack of creative thinking and a homogeneity in thinking that is based on the data sets that these models are trained on rather than true innovation

Shafik Bahou has had a varied career in both business and academia and now leads his own consulting and R&D company specializing in the intersection of human development, emerging technologies, and business systems. His presentation will look into the implications and impact of AI in society from the perspective of how it changes us, our relationships with others, and our relationship with the natural world around us.

Please join Shafik Bahou and Christopher Wright for this engaging and important discussion.



Sponsored by the International Association for Peace and Economic  
Development of Universal Peace Federation



**LIVE STREAM**



[US.UPF.ORG/LIVE](https://www.us.upf.org/live)



Zoom Registration



@UPFUSA



@UPFUSA