

# Creation In Likeness - what I realize during Biology class

Wong Jian Rong

January 20, 2011

One day, during **BIOLOGY** class in school, teacher was teaching a topic on circulatory system. Which contains three components - medium, vessels and pump. Most organisms medium is blood while some insects are hemolymph. Vessels are arteries, veins and capillaries. The heart is the pump.

First, we learned about human circulatory system then amphibians, fish and lastly insects. After going through these four circulatory system... **BOOM!** I realize something about the chambers of each organisms heart, something came to my mind of what I read before - **CREATION IN LIKENESS**.

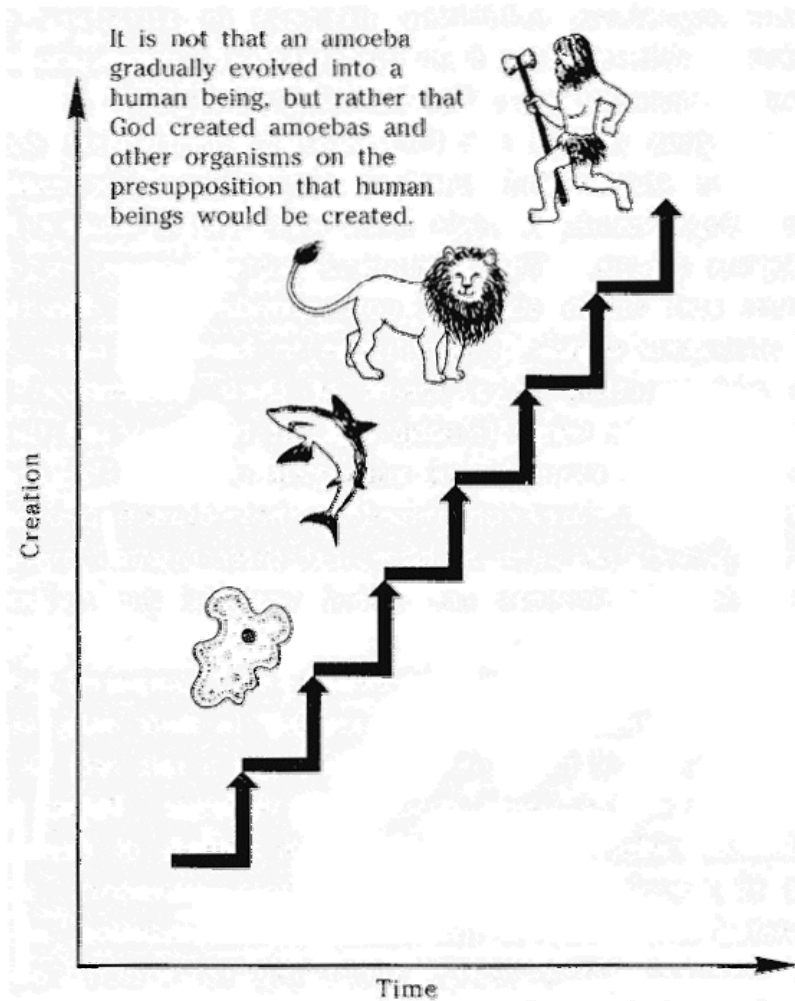
What I read before was '[From Evolution Theory to a New Creation Theory](#)' by Sang Hun Lee. It's about proofing error in evolution and introducing a new creation theory based on the unification thought. A very interesting book indeed to witness to people who believe in evolution/scientist/etc.

In the chapter 'A New Theory of Creation Based on Unification Thought', it says in what order did living beings originate?

In what order did living beings originate?	
Description of the Bible	Present - day Science
●First Day Light	Big Bang Primitive Galaxy
●Second Day Firmament (Upper Water and Lower Water)	Sun and Earth; Primitive Air & Primitive Ocean
●Third Day Earth & Sea Grass and Tree	Bacteria Algae
●Fourth Day Two Great Lights, Stars (from the Breaking of the Clouds)	Mosses Marine Invertebrates
●Fifth Day Living Creature of the Water, Fowl	Ferns, Gymnosperms Fishes, Amphibia Reptiles, Birds
●Sixth Day Beast, Cattle Human Beings	Angiosperms Mammals Human Beings



And also introduce 'Creation by Stages', saying that it is not that an amoeba evolve into > invertebrates and evolve into > fish > amphibians > birds > reptile > mammals > anthropoids and into human beings. BUT rather that God created amoebas and other organisms on the presumption that human beings would be created. Because humans are the most precious object partners to God.



AND also introduces Creation

In Likeness!

Which is the most interesting explanation to proof error in evolution.

"In the beginning, God conceived in His own image the image of the human being to be created. The image of the human being means the design of human being. And taking that image as the model, God conceived each one of all things by **abstracting** and **transforming** the human image."

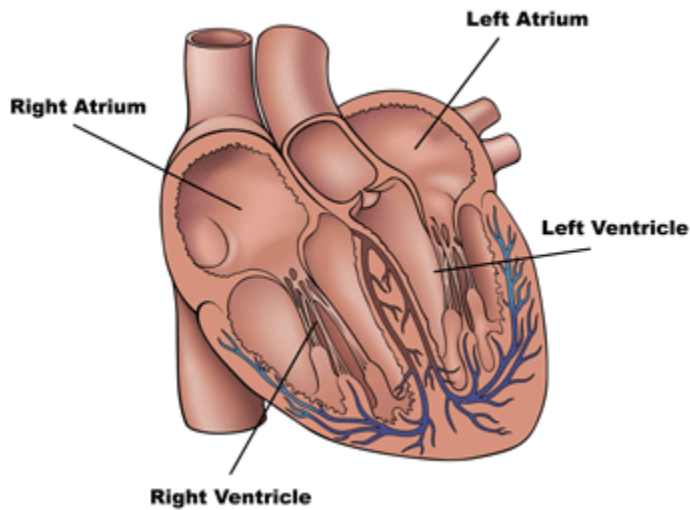
"The ape did not evolve to walk upright. In God's plan, the ape, which would walk with it's hands touching the ground, was conceived out of **THE IDEA** of the human being, who would walk upright."

During BIOLOGY class, I found CREATION IN LIKENESS too in the circulatory system!

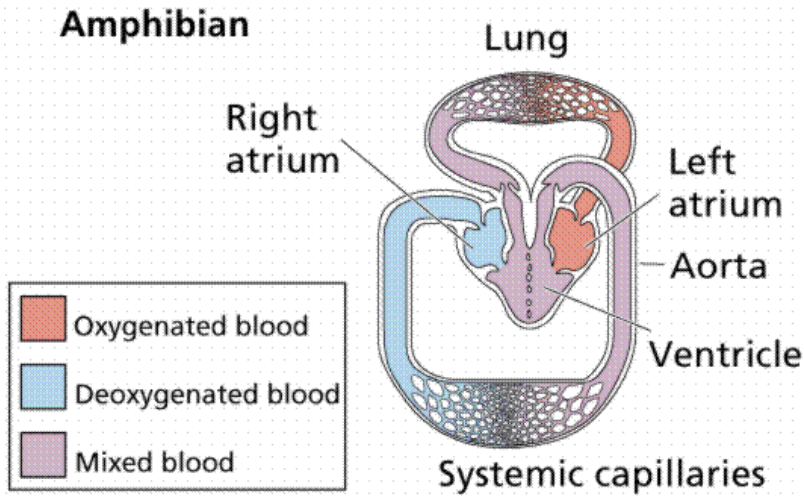
Note that **Bold** are the circulatory systems I learned:

*Human > Anthropoids > Mammals > Birds > Reptiles > Amphibians > Fishes > Invertebrates > Protozoans > Organic Matter*

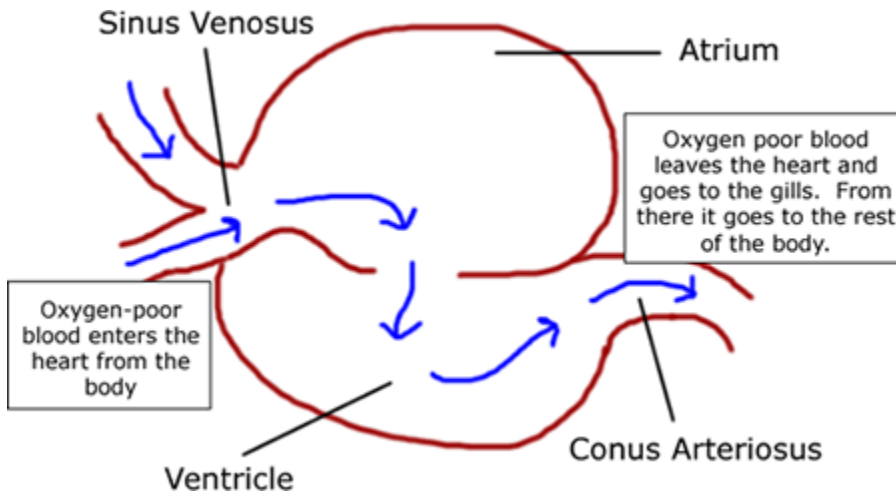
Human Beings heart has four chambers (Right Atrium, Left Atrium, Right Ventricle, Left Ventricle):



Amphibians heart has three chambers (Left Atrium, Right Atrium, Ventricle):

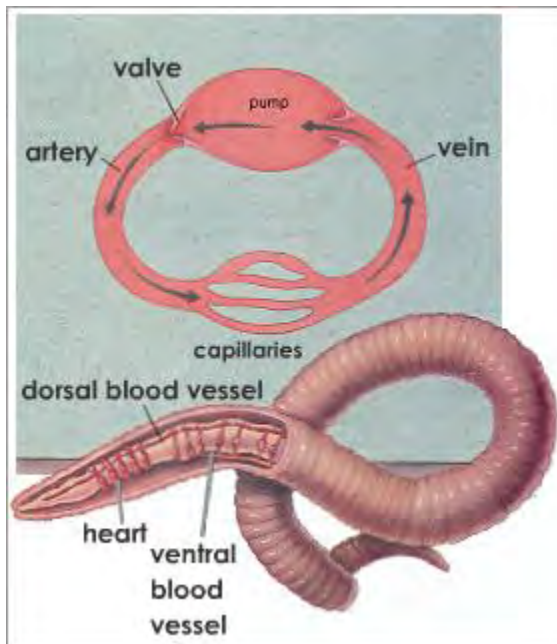


Fish heart has two chambers (Atrium & Ventricle):

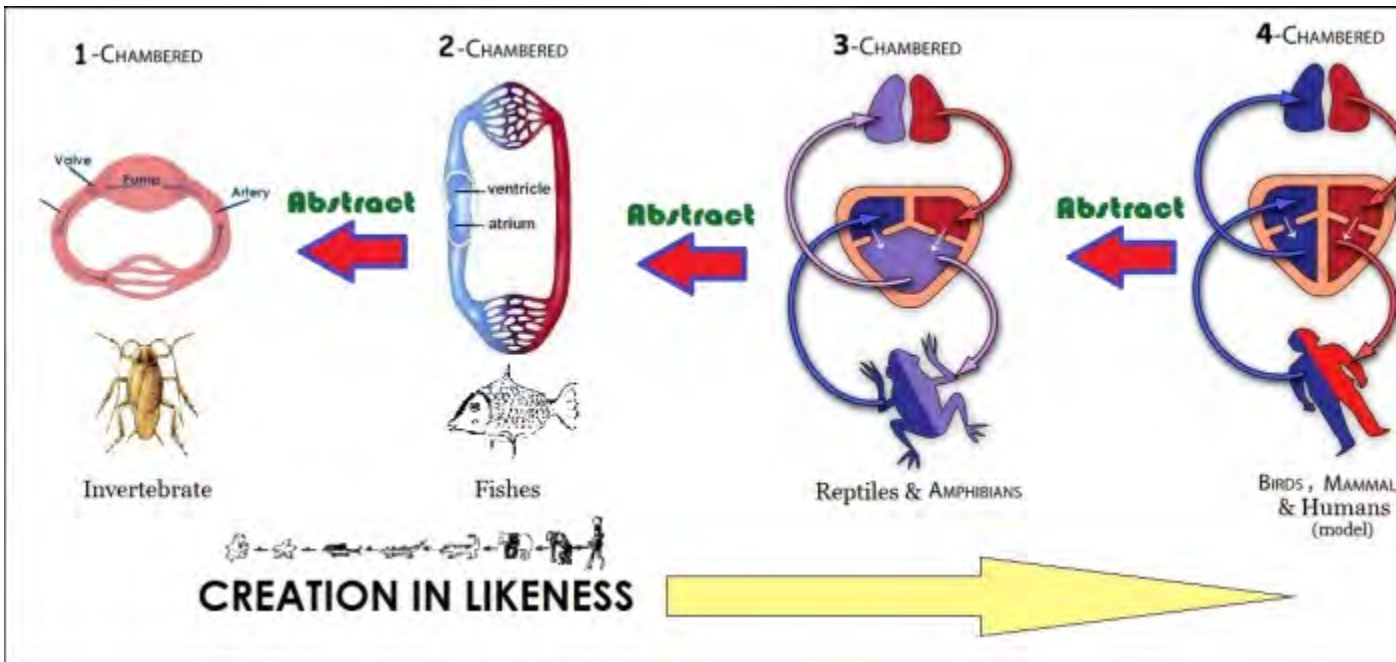


Invertebrates heart

has one chamber only:



And after doing some further research online, I came to this conclusion:



This realization raise my faith level up another level! Humans are indeed the Lords of Creation. God is Great! :)