



세계통일교 선교본부
Unification Church World Mission Headquarters

13F Downon Bldg., Dohwa 2 dong Mapo-gu, Seoul, Republic of Korea 121-728
Tel: (82-2) 3275-4200 Fax: (82-2) 3275-4220 E-mail: mission@tongil.or.kr

Ref. No. WMH 2011-41

To : Regional Presidents, National Messiahs, National Leaders
CC : Blessed Family Department Directors of each region
From : Unification Church World Mission Headquarters
Date : 4.29 the Heavenly Calendar (May 31, 2011)
Re. : Matching Guidelines

1. May God and True Parents' blessings and love be with all regions, mission nations and providential organizations.

2. Details of the official memo sent by the Korean Headquarters regarding the Matching Guidelines have been presented at the regional presidents meeting in 2010. This memo is to remind the regional presidents of the key points. Regional presidents, directors of the Blessed Family Department in each region and relevant leaders should fully be aware of these guidelines and do their best in guiding the blessing operations in the field.

3. Main points of the matching guidelines

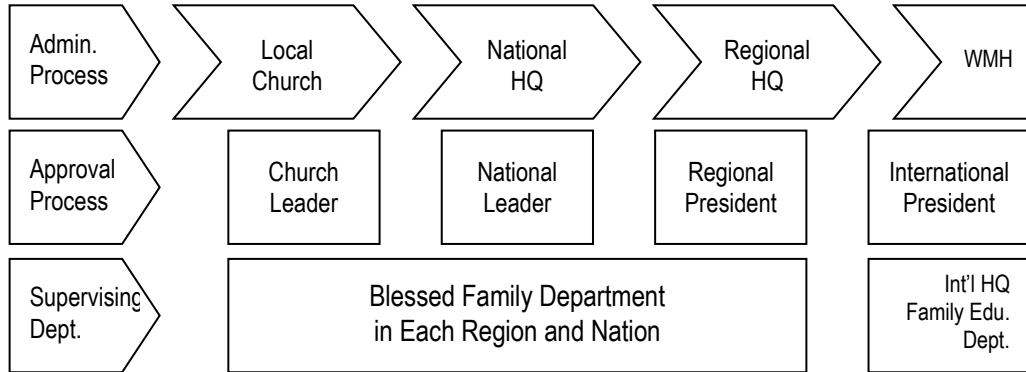
- 1) **The authority of conducting “absolute matching” of candidates in person or of their photos is restricted to True Parents alone.**
- 2) **Regional presidents, national leaders and church leaders (officially appointed by the World Mission Headquarters or by their respective national headquarters) can serve the role of a “Matching Supporter.”**
- 3) **Matching direction:** National headquarters should make arrangements and preparations for candidates to meet in person or through an on-line matching system. As a “Matching Supporter,” church leaders should assist and guide blessing candidates to make the best choice in deciding on their partner; this choice should fully reflect the candidates own intent and volition.
- 4) **Step-by-step “relative matching” process:** “Relative matching” is accomplished through a process where a candidate decides the most appropriate partner centering on God and True Parents, and with the cooperation of a qualified leader (officially appointed matching supporter) through a matching process (on-line, off-line) that fully reflects the candidate's will. Both candidates in a matching should be guided to take full responsibility over the process of and decision in the matching. Furthermore, this process and final decision should manifest the blessing ideal and its value centering on absolute sex.
- 5) The matching of candidates across national borders should be carried out under the supervision of candidate's national church headquarters, must comply with the administrative liaison described below, and should not be carried out individually.



세계통일교 선교본부
Unification Church World Mission Headquarters

13F Dowon Bldg., Dohwa 2 dong Mapo-gu, Seoul, Republic of Korea 121-728
Tel: (82-2) 3275-4200 Fax: (82-2) 3275-4220 E-mail: mission@tongil.or.kr

4. Administrative process and approval (screening) process for the matching



5. Standard for recognizing a blessed family

- 1) **All blessing candidates who wish to receive True Parents' Blessing must complete the official administrative and screening process indicated in the above diagram to be eligible as an officially recognized blessed family.**
- 2) **Those who do not follow this official administrative and screening process, or who have submitted to a screening process by non-approved organizations, cannot be recognized as a blessed family.**

6. Administrative matters

- 1) Regional presidents should collect and compile the name list and photos of "relatively matched" candidates that were matched with the support of the matching supporter and must submit this to the Family and Education Department of the International Headquarters through the regional Blessed Family Department.
- 2) Regional headquarters should guide the national headquarters of each mission nation on the matching guidelines to prevent any errors in the operations dealing with the blessing.

7. Inquiries

All inquiries regarding matters relevant to matching or blessing affairs should be directed to the International Headquarters Family Education Department in Korea through the Blessed Family Department (or any person who serves this function) at the regional headquarters.

Hyung Jin Moon
International President

